

# Guidelines for the Management of Chronic Kidney Disease in HIV-Infected Patients: Recommendations of the HIV Medical Association of the Infectious Diseases Society of America

Samir K. Gupta,<sup>1</sup> Joseph A. Eustace,<sup>3</sup> Jonathan A. Winston,<sup>4</sup> Ivy I. Boydston,<sup>5</sup> Tejinder S. Ahuja,<sup>7</sup> Rudolph A. Rodriguez,<sup>8</sup> Karen T. Tashima,<sup>10</sup> Michelle Roland,<sup>9</sup> Nora Franceschini,<sup>11</sup> Frank J. Palella,<sup>13</sup> Jeffrey L. Lennox,<sup>14</sup> Paul E. Klotman,<sup>4</sup> Sharon A. Nachman,<sup>6</sup> Stephen D. Hall,<sup>2</sup> and Lynda A. Szczech<sup>12</sup>

Divisions of <sup>1</sup>Infectious Diseases and <sup>2</sup>Clinical Pharmacology, Department of Medicine, Indiana University School of Medicine, Indianapolis; <sup>3</sup>Division of Nephrology, Johns Hopkins University, School of Medicine and Department of Epidemiology, Bloomberg School of Public Health, Baltimore, Maryland; <sup>4</sup>Division of Nephrology, Department of Medicine, Mount Sinai School of Medicine, New York, and <sup>5</sup>Division of Nephrology and Hypertension and <sup>6</sup>Division of Infectious Diseases, Department of Pediatrics, State University of New York, Stony Brook; <sup>7</sup>Division of Nephrology, Department of Medicine, University of Texas Medical Branch, Galveston; <sup>8</sup>Division of Nephrology, Department of Medicine, San Francisco General Hospital and <sup>9</sup>Positive Health Program at San Francisco General Hospital and the UCSF AIDS Research Institute, Department of Medicine, University of California at San Francisco; <sup>10</sup>Division of Infectious Diseases, Department of Medicine, The Miriam Hospital, Brown Medical School, Providence, Rhode Island; <sup>11</sup>Division of Nephrology and Hypertension, Department of Medicine, University of North Carolina at Chapel Hill, and <sup>12</sup>Duke Clinical Research Institute and the Division of Nephrology, Department of Medicine, Duke University Medical Center, Durham, North Carolina; <sup>13</sup>Division of Infectious Diseases, Department of Medicine, Northwestern University Feinberg School of Medicine, Chicago, Illinois; and <sup>14</sup>Grady Infectious Disease Program, Division of Infectious Diseases, Department of Medicine, Emory University, Atlanta, Georgia

## EXECUTIVE SUMMARY

Several lines of evidence point to kidney disease as an important complication of human immunodeficiency virus (HIV) infection. Kidney function is abnormal in up to 30% of HIV-infected patients, AIDS-related kidney disease has become a relatively common cause of end-stage renal disease (ESRD) requiring dialysis, and kidney disease may be associated with progression to AIDS and death [1–4]. Because HIV caregivers commonly manage all aspects of treatment for their patients, these clinicians are in the unique and important position to identify those patients at risk for renal disease and implement potentially preventative and therapeutic strategies. Consequently, an understanding of the causes, epidemiology, screening methods, and ther-

apeutic strategies associated with chronic kidney disease (CKD) in the HIV-infected patient is required.

However, clinical research in this emerging area has not yet matured to the point at which it can provide clear evidence on how best to treat these patients. Therefore, assembled clinical experts in this field have reviewed the available literature and have offered the following recommendations, many of which are extrapolated from research and clinical guidelines [5] involving the general population with kidney disease. These guidelines address the clinical issues involved in both adults and children with HIV-related renal diseases and are written for those providing inpatient and outpatient care for these patients and for the patients themselves. Although the authors feel that these recommendations should generally apply to all HIV-infected patients, it is understood that providers need to tailor these guidelines around the needs and circumstances of the individual patient.

We recommend that all patients at time of HIV diagnosis be assessed for existing kidney disease with a screening urine analysis for proteinuria and a calculated estimate of renal function (creatinine clearance or glo-

Received 7 March 2005; accepted 7 March 2005; electronically published 22 April 2005.

These guidelines were developed and issued on behalf of the Infectious Diseases Society of America.

Reprints or correspondence: Dr. Samir K. Gupta, Wishard Hospital, OPW-430, 1001 W. 10th St., Indianapolis, IN 46202 (sgupta1@iupui.edu).

**Clinical Infectious Diseases** 2005;40:000–000

© 2005 by the Infectious Diseases Society of America. All rights reserved.  
1058-4838/2005/4011-00XX\$15.00

merular filtration rate [GFR]) (C-III); a renal function estimate also allows the caregiver to properly prescribe those antiretrovirals and other commonly used medications that require renal adjustment. If there is no evidence of proteinuria at initial evaluation, patients at high risk for the development of proteinuric renal disease (e.g., African American persons, those with CD4<sup>+</sup> cell counts <200 cells/ $\mu$ L or HIV RNA levels >4000 copies/mL, or those with diabetes mellitus, hypertension, or hepatitis C virus coinfection) should undergo annual screening (B-II). Patients with proteinuria of grade  $\geq$ 1+ by dipstick analysis or reduced renal function (GFR, <60 mL/min per 1.73 m<sup>2</sup>) should be referred to a nephrologist and undergo additional evaluation, including quantification of proteinuria, renal ultrasound, and potentially renal biopsy (B-II). Therapy for HIV-associated renal diseases should be individualized to the patient's clinical circumstances and to the underlying renal histology findings. Blood pressure should be controlled, with the initial preferential use of angiotensin-converting enzyme (ACE) inhibitors or angiotensin receptor blockers for those patients with proteinuria (B-II); however, calcium channel blockers should be avoided in treating patients receiving protease inhibitors (D-II). Patients with HIV-associated nephropathy (HIVAN) should be treated with HAART at diagnosis (B-II). HAART should not be withheld from patients simply because of the severity of their renal dysfunction (B-III). Addition of ACE inhibitors or angiotensin receptor blockers (ARBs) should be considered in treating both adult and pediatric patients with HIVAN if HAART alone does not result in improvement of renal function (B-II). Prednisone should also be considered in treating adult patients with refractory HIVAN (B-II), although steroids are not recommended for children with HIVAN (D-II). Preliminary data suggest that renal transplantation may be a viable treatment option for patients with ESRD and should be considered if provided in a supervised clinical trial or at centers with adequate experience in this area (C-III). Dialysis and the placement of arteriovenous fistulae should not be withheld for patients solely because of HIV infection (A-II). Among those patients at higher risk (see "Renal Effects of Commonly Used Medications in HIV Care"), biannual monitoring for renal function and urinary abnormalities is warranted for those receiving indinavir (B-II) or tenofovir (B-III). HIV-infected patients requiring hemodialysis should have antibody to hepatitis B surface antigen (anti-HBs) titers checked after receiving a standard primary series of 3 hepatitis B vaccinations, and they should receive a fourth injection if these levels are <10 IU/L (B-II).

## INTRODUCTION

We first provide general reviews regarding the evaluation of renal disease and the epidemiology of CKD in the HIV-infected population; these are followed by specific recommendations for the management of cases in this population. The evidence for

these guidelines was collected using MEDLINE searches of the relevant literature and reviews of pertinent abstracts (all in the English language) presented at both major infectious diseases and nephrology society meetings from January 2000 through February 2004. The evidence was graded using the Infectious Diseases Society of America–United States Public Health Service system for rating recommendations in clinical guidelines (table 1). These guidelines will be updated periodically as evidence from the ongoing research in CKD epidemiology, antiretroviral pharmacokinetics, treatment strategies for progressive nephropathies, and renal transplantation in the HIV-infected population accumulate.

**Acute renal failure.** An important first step in evaluating kidney disease is to distinguish acute renal failure (ARF) from CKD. ARF is a clinical syndrome defined as an abrupt decrease in GFR over days to weeks. For study toxicity-grading purposes, the Adult AIDS Clinical Trials Group has defined ARF as an increase in serum creatinine level to values >1.5 mg/dL (or >1.3 times the upper limit of normal at the respective clinical laboratory) that returns to baseline values within 3 months. Among outpatients, ARF is commonly caused by drug-specific renal toxicities (see "Renal Effects of Commonly Used Medications in HIV Care") and prerenal states associated with dehydration. Recommendations for diagnosing, preventing, and treating ARF are beyond the focus of the current recommendations.

**CKD.** A standardized nomenclature for chronic diseases of the kidney has only recently been established. The reader will find several terms in the medical literature that are used interchangeably and often lack precision, such as "chronic renal failure" or "chronic renal insufficiency." The National Kidney Foundation has endorsed the term "chronic kidney disease (CKD)," defined as evidence of kidney damage that persists for  $\geq$ 3 months [5]. As shown in table 2, the severity of CKD is graded according to renal function, on the basis of estimates of either the creatinine clearance (calculated using the Cockcroft-Gault equation) [6] or the GFR (calculated using the modification of diet in renal disease [MDRD] equation) [7]. Note that ESRD is defined as stage V CKD.

Abnormal kidney function may not be recognized among patients who have lower relative muscle mass (e.g., women, older patients, and patients with lower lean body weights due to cachexia or liver disease) using serum creatinine level alone. Equations adjusting for surrogates of muscle mass (e.g., age, weight, race, and sex), therefore, provide a more sensitive estimation of true renal function. The full MDRD equation also adjusts for serum albumin level. A simplified MDRD equation [8] that does not rely on albumin levels or weight is also highly accurate. These equations have not been validated for the HIV-infected population; therefore, there is no absolutely preferred equation to use consistently among patients with HIV infection. For CKD staging purposes, the simplified MDRD equation is,

**Table 1. Infectious Diseases Society of America–United States Public Health Service grading system for ranking recommendations in clinical guidelines.**

Category, grade	Definition
Strength of recommendation	
A	Good evidence to support a recommendation for use
B	Moderate evidence to support a recommendation for use
C	Poor evidence to support a recommendation
D	Moderate evidence to support a recommendation against use
E	Good evidence to support a recommendation against use
Quality of evidence	
I	Evidence from $\geq 1$ properly randomized, controlled trial
II	Evidence from $\geq 1$ well-designed clinical trial, without randomization; from cohort or case-controlled analytic studies (preferably from $>1$ center); from multiple time-series; or from dramatic results from uncontrolled experiments
III	Evidence from opinions of respected authorities, based on clinical experience, descriptive studies, or reports of expert committees

in general, preferred. Because studies of medications in renal failure have traditionally used the Cockcroft-Gault equation, it would be appropriate to use this estimating formula in deciding on dosage. Versions of these equations are available in electronic format for use online at the Web site of the Kidney Disease Outcomes Quality Initiative of the National Kidney Foundation (K/DOQI) [9] and are presented below.

*Cockcroft-Gault:*

$$\text{CrCl (mL/min)} = \frac{[140 - \text{age (years)}] \times \text{weight (kg)} [\times 0.85 \text{ if female}]}{72 \times \text{serum creatinine (mg/dL)}}$$

*Simplified MDRD:*

$$\begin{aligned} \text{GFR (mL/min/1.73m}^2) &= 186 \times [\text{serum creatinine (mg/dL)}]^{-1.154} \\ &\times [\text{age (years)}]^{-0.203} \\ &\times [0.742 \text{ if female}] \times [1.212 \text{ if black}] \end{aligned}$$

The CKD staging system also uses other evidence of kidney disease (such as albuminuria, proteinuria, or abnormal findings on imaging of the kidneys) to assist in identifying early renal dysfunction when serum creatinine and/or GFR are normal. Screening for early stages of CKD, therefore, requires measurement of urinary albumin-to-creatinine or protein-to-creatinine ratios. These “spot” quantitative urine measurements of abnormal glomerular function are accurate, correlate with 24-h urine measurements, and avoid the inconvenience and difficulty in collection of timed urine specimens in clinical practice [10]. Patients with stage III and stage IV CKD have more-severe reduction in GFR. These patients are at high risk for

developing ESRD (stage V CKD) and death and should, therefore, be carefully evaluated to determine the etiology and severity of their disease.

The benefits of screening for stage I–II CKD have been unequivocally demonstrated in diabetic kidney disease, in which identifying and treating patients with microalbuminuria (a urinary albumin-to-creatinine ratio  $\geq 30$  mg/g), macroalbuminuria (an albumin-to-creatinine ratio of  $\geq 300$  mg/g), or overt proteinuria (a protein-to-creatinine ratio of  $\geq 300$  mg/g) can slow or prevent the progression of kidney disease [11, 12]. Screening for albuminuria and proteinuria has also become an important tool for identifying those at increased risk for atherosclerotic vascular disease [13].

**EPIDEMIOLOGY**

**Spectrum of HIV-related renal diseases.** Up to 60% of all renal biopsies performed for patients with CKD reveal characteristic histological findings designated as HIVAN, which is a collapsing form of focal glomerulosclerosis (FSGS) with tubulointerstitial injury, most often presenting as the nephrotic syndrome. Increasing evidence implicates direct intrarenal HIV infection and expression of its genes in the pathogenesis of HIVAN [14–17]. In addition to HIVAN, specific renal histological conditions encountered among patients with HIV infection include membranous nephropathy resulting from coinfection with either hepatitis B or C or syphilis; membranoproliferative glomerulonephritis associated with hepatitis C virus coinfection and mixed cryoglobulinemia [18, 19]; diabetic and hypertensive nephropathies [20]; and immune complex glomerulonephritis, in which IgA is directed against HIV antigens [21]. There is no evidence in the literature that suggests a definitive way other than renal biopsy to distinguish patients with HIVAN from patients with diseases other than HIVAN. However, patients with glomerular

diseases other than HIVAN are less likely to be black, more likely to have hepatitis B virus infection, less likely to have the diagnosis of hypertension, and have a greater mean CD4<sup>+</sup> lymphocyte count [19].

**Incidence, prevalence, and risk factors of CKD.** In 2000, 1.5% (range, 0.3%–3.4%) and 0.4% (range, 0%–1.0%) of dialysis patients were reported to have HIV infection and AIDS, respectively [22]. From 1985 through 2000, the percentage of centers that reported providing dialysis for patients with HIV infection increased from 11% to 37%. Because dialysis patients in the United States do not necessarily undergo routine screening for HIV infection, true incidence and prevalence estimates are probably higher than those reported by either the Centers for Disease Control and Prevention (CDC) or the United States Renal Data System (USRDS).

Incidence and prevalence rates of HIV-infected patients with ESRD reported by various studies utilizing the USRDS database have demonstrated similar results [23, 24]. The incident number of patients with HIVAN undergoing dialysis each year increased through 1995, when 939 patients with HIVAN initiated dialysis. Since then, the number has remained stable. This salutary effect on the incidence of ESRD secondary to HIVAN likely reflects changes in the natural history of HIV disease consequent to the use of HAART. During the years 1995–1999, the incidence of ESRD secondary to HIVAN for African American men aged 25–44 years decreased from 8.5% to 6.8%. However, the number of prevalent cases increased from 1346 (0.4%) to 3058 (0.8%), and the 1-year survival rate improved from 52% to 69% [25]. As HIVAN predominantly affects black persons, it is not surprising that most HIV-infected ESRD patients (87.8%) are African American [26]. HIVAN had a stronger association with black race than with any other cause of renal failure except sickle cell anemia. The prevalence of HIVAN among HIV-infected black patients has been reported to be 3.5% in a cohort screened for proteinuria in a primary care setting [27].

In addition to African American race [28–35], decreased CD4<sup>+</sup> cell count [31, 36] and a family history of renal disease [37] are risk factors for the development of HIVAN. Older reports suggest that injection drug use [28–32, 38, 39] may also be a risk factor, but this likely represents confounding with the other epidemiologic factors (e.g., socioeconomic status, race, and hepatitis C virus coinfection) from the early stages of the HIV epidemic. Although male sex has also been reported as a risk factor [28, 35], the incidence of HIVAN in black women is increasing proportionately to the escalating rate of HIV infection in this group [26, 40, 41], strongly suggesting that HIVAN is not sex-specific. A large series of patients with HIVAN (*n* = 102) confirmed that black race is a major risk factor for the presence of HIVAN but suggests that sex, risk factors for HIV acquisition, and CD4<sup>+</sup> lymphocyte count at the time of

**Table 2. Stages of chronic kidney disease.**

Stage	Description	GFR, mL/min per 1.73m <sup>2</sup>
I	Kidney damage with normal or increased GFR	≥90
II	Kidney damage with mildly decreased GFR	60–89
III	Moderately decreased GFR	30–59
IV	Severely decreased GFR	15–29
V	Kidney failure	<15 (or dialysis)

**NOTE.** Adapted from [5]. Chronic kidney disease is defined as either kidney damage or glomerular filtration rate (GFR) <60 mL/min per 1.73m<sup>2</sup> for ≥3 months. Kidney damage is defined as pathologic abnormalities or markers of damage, including abnormalities in urine test results or the findings of imaging studies.

diagnosis are not as significant as previously described [42]. The currently available epidemiological data may be limited by potential biases introduced through selection of patients following referral to a nephrologist or by the performance of either biopsy or autopsy. Patients identified in such a manner may have a disproportionately greater severity of renal disease or a more aggressive course.

Specific factors that have been associated with decreases in renal function among HAART-treated women include higher baseline HIV load (>4000 copies/mL), lower baseline CD4<sup>+</sup> cell count (<200 cells/μL), a diagnosis of diabetes, and hypertension [1]. Recent reports have also suggested that the baseline presence of proteinuria, with or without concomitant elevations in the serum creatinine level, is a sensitive prognosticator of the eventual development of CKD [2, 3]. The prevalence of grade 1+ proteinuria by dipstick analysis of urine, a marker for glomerular disease, is ~30% [1, 2, 43]. In the CDC-sponsored HIV Epidemiology Research Study Group (HERS), 2+ proteinuria (found in 7.2% of subjects) and/or elevated serum creatinine levels (2.4%) were frequently noted on initial visit among urban, HIV-infected women; these conditions subsequently developed in an additional 14% and 4%, respectively, over a median of 21 months [3].

**Survival of the HIV-infected patient with CKD.** Early studies reported that persons with newly diagnosed AIDS and ESRD survived a mean of 1–3 months after initiating hemodialysis [29, 44]. Such studies predominantly reflected the clinical course of patients with advanced HIV disease who often had other opportunistic diseases. As screening for HIV became more routine and resulted in earlier detection, several groups reported improved survival among HIV-infected dialysis patients beginning in the early 1990s [22, 45–49]. Although HIV-infected patients undergoing dialysis in the HAART era have experienced improvements in survival [45], such benefits may still be attenuated when compared with the general HAART-treated HIV-infected population [50].

Recent data from the USRDS has demonstrated that the mortality rates for patients with AIDS-related nephropathy have improved, compared with mortality rates in pre-HAART era reports, and are now approaching the mortality rates in the general ESRD population. The first-year survival rate for HIV-infected patients with ESRD (who may or may not be receiving HAART) has increased to 74%; the annual death rates for HIV-infected and HIV-uninfected patients receiving dialysis are now 240.2 deaths per 1000 patient-years and 236.4 deaths per 1000 patient-years, respectively [24]. Several reports have demonstrated the maintenance of stable renal function among HAART recipients, compared with those not receiving HAART [51, 52], even in patients with advanced HIV disease [53].

In the aforementioned CDC-sponsored HERS study, the presence of proteinuria and/or elevated serum creatinine levels was positively associated with an increased risk of death (adjusted relative hazard, 2.5), as well as with having renal causes of death recorded on death certificates (26% of total deaths) [3]. Likewise, renal laboratory abnormalities were associated with higher hospitalization rates (adjusted relative risk, 1.5) [54]. A recent report from the Women's Interagency HIV Study Cohort further elucidated that proteinuria and elevated serum creatinine levels have been associated with greater mortality both before and after initiation of HAART [4]. In this study, although proteinuria was positively associated with a risk of AIDS-defining illness in the pre-HAART era, elevated serum creatinine levels remained a predictor of AIDS-defining illness in the HAART era [4]. Moreover, other recent data suggest that, in an era when overall AIDS-related mortality and rates of traditional AIDS-related opportunistic infections remain very low among HAART-treated patients, the presence of severe renal abnormalities and dysfunction are significantly associated with mortality [55, 56].

## SCREENING AND INITIAL EVALUATIONS

**Recommendation 1.** All patients at the time of HIV diagnosis should be assessed for existing kidney disease with a screening urine analysis for proteinuria and a calculated estimate of renal function (C-III).

**Recommendation 2.** If there is no evidence of proteinuria at initial evaluation, patients at high risk for the development of proteinuric renal disease (i.e., African American persons, those with CD4<sup>+</sup> cell counts <200  $\mu$ L or HIV RNA levels >4000 copies/mL, and those with diabetes mellitus, hypertension, or hepatitis C virus coinfection) should undergo annual screening (B-II). Renal function should be estimated on a yearly basis to assess for changes over time (B-II).

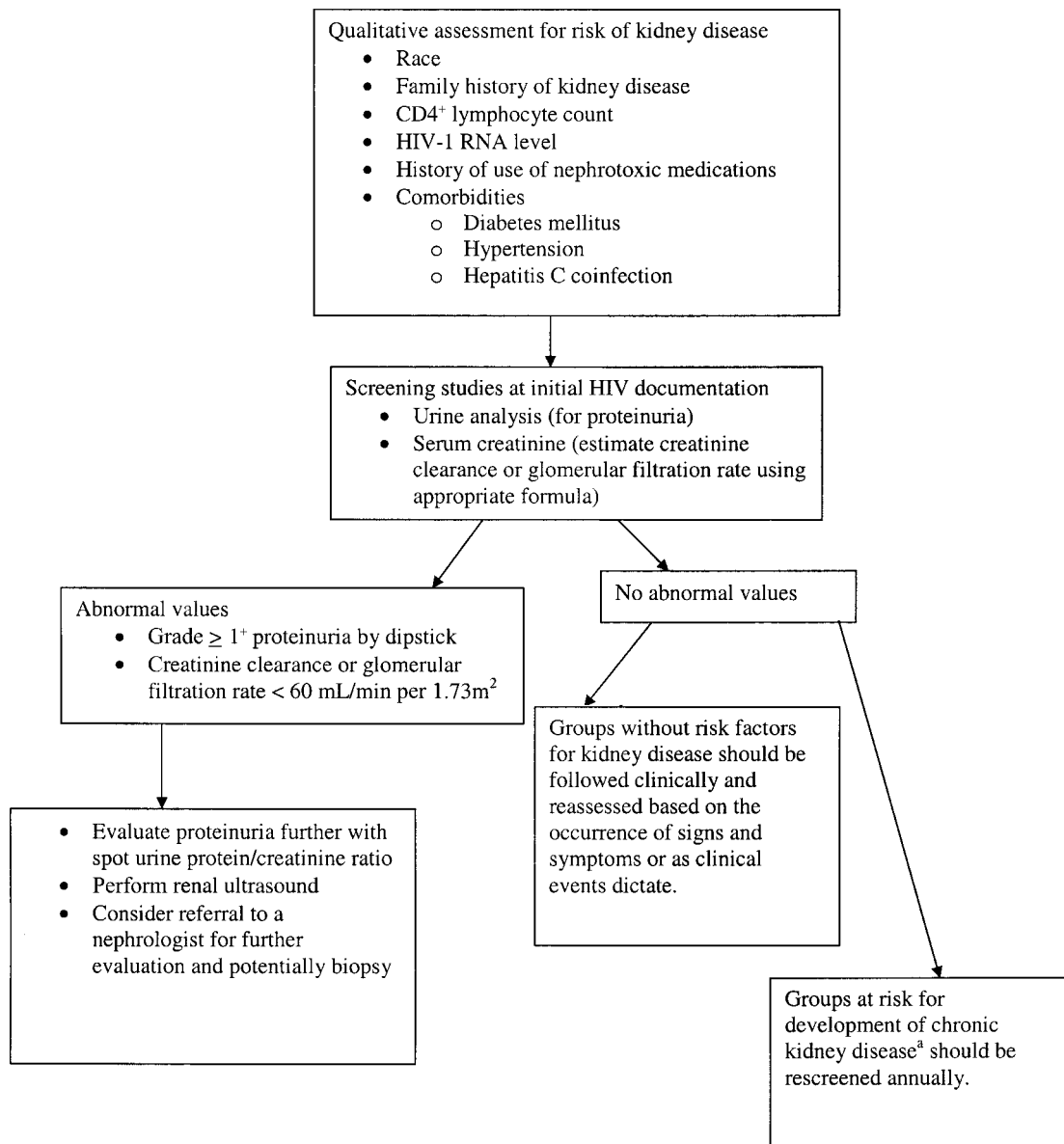
**Recommendation 3.** Additional evaluations (including quantification of proteinuria, renal ultrasound, and potentially renal biopsy) and referral to a nephrologist are recommended for

patients with proteinuria of grade  $\geq$ 1+ by dipstick analysis or GFR <60 mL/min per 1.73 m<sup>2</sup> (B-II).

**Screening for CKD.** HIV infection appears to be a risk factor for developing CKD. Although no studies have examined the utility of systematic screening for early kidney disease in preventing progression of renal dysfunction in HIV-infected patients, there is evidence that early treatment of CKD is beneficial [15, 52, 57–61]. The clinical evaluation of patients at increased risk for CKD includes assessment of markers of kidney damage, such as proteinuria, kidney function, and blood pressure. Even in patients with normal kidney function, the presence of proteinuria may indicate early kidney disease. If initial urine analysis results are normal, annual follow-up urine analyses are recommended to screen for newly developed kidney damage for the following groups, which are at higher risk for the development of proteinuria and poor renal outcome: African American persons, patients with diabetes, patients with hypertension, patients with hepatitis C virus coinfection, and patients with HIV RNA levels >4000 copies/mL or absolute CD4<sup>+</sup> lymphocyte counts <200 cells/ $\mu$ L [1, 2, 42]. An estimate of creatinine clearance or GFR should also be annually performed to screen for renal dysfunction that may develop over time and that may herald worse overall prognosis [3] and to stage the patient's condition, as outlined in table 2. A suggested algorithm for screening is found in figure 1.

**Diagnostic evaluations.** If proteinuria of grade  $\geq$ 1+ (which roughly correlates to a protein level of 30 mg/dL or a protein-to-creatinine ratio >300 mg/g [62]) is present on screening urine analysis, then quantifying urine protein excretion using spot urine albumin-to-creatinine or protein-to-creatinine ratios provides information relevant to both type and activity of renal disease. In patients with evidence of CKD, imaging of the kidneys via ultrasound or other modality may provide information on the presence of stones, extrarenal and intrarenal lesions, and kidney size. Although HIVAN is associated with large echogenic kidneys [63], this relationship is not sufficiently predictive of HIVAN to use as a diagnostic tool. The utility of ultrasound is that patients with small kidneys (i.e., <9 cm in length) may have kidney disease that is advanced and irreversible. Additional studies usually performed to identify the cause of CKD are serological tests for hepatitis B and C, tests to determine complement levels, antinuclear antibody testing, testing to determine levels of cryoglobulin in serum, quantitative immunoglobulin testing, serum and urine protein electrophoresis testing, and testing to determine levels of glucose in serum.

Referral to a nephrologist is recommended for the evaluation of etiological results and/or the treatment of CKD. Although all decisions, including the timing of referral, should be made on a case-by-case basis, indications for such referral include abnormal kidney function, declining kidney function, or proteinuria [5]. Indications for renal biopsy in patients with HIV



**Figure 1.** Suggested screening algorithm for HIV-related renal diseases. <sup>a</sup>Groups at risk for chronic kidney disease include individuals of African American race; individuals with diabetes, hypertension, or hepatitis C virus coinfection; individuals with CD4<sup>+</sup> cell counts <200 cells/mm<sup>3</sup>; and individuals with HIV RNA levels >4000 copies/mL.

infection should be the same as in patients without HIV infection, including significant proteinuria, evidence of progressive disease (such as increasing proteinuria or decreasing GFR), unexplained ARF or subacute renal failure, or an acute nephritic syndrome (e.g., hematuria, proteinuria, or hypertension with renal insufficiency) [64]. Because clinical diagnosis on the basis of markers such as CD4<sup>+</sup> cell count, HIV RNA level, and degree of proteinuria may not predict histological diagnosis in HIV-infected patients [20, 36] and because treatment options and prognosis may be influenced by the actual histological diagnosis [19], renal biopsy is recommended whenever feasible. There is no evidence to suggest that patients with HIVAN experience

risk related to biopsy that is different from that experienced by patients with CKD who are not HIV infected.

## MANAGEMENT

**Recommendation 1.** In HIV-infected patients with evidence of nephropathy, blood pressure should be controlled to a level no higher than 125/75 mm Hg (B-III), with the initial preferential use of ACE inhibitors or ARBs for those patients with proteinuria (B-II). Calcium channel blockers should be avoided in patients receiving protease inhibitors (D-II).

**Recommendation 2.** Dialysis and the placement of arterio-

venous fistulae (native fistulae preferred [A-II]) should not be withheld for patients solely because of HIV infection (A-II).

**Recommendation 3.** Renal transplantation may be considered for patients with ESRD if provided in a supervised clinical trial or at centers with adequate experience in this area (C-III).

**Recommendation 4.** Patients with HIVAN should be treated with HAART at diagnosis (B-II). HAART should not be withheld from patients simply because of the severity of their renal dysfunction (B-III).

**Recommendation 5.** Addition of ACE inhibitors, ARBs, and/or prednisone should be considered in patients with HIVAN if HAART alone does not result in improvement of renal function (B-II).

**General measures.** Hypertension is both a cause of CKD in the general population and a proven risk factor for faster progression towards dialysis. The prevalence of hypertension in unselected HIV-infected patients is 12%–21% [65, 66]. Current guidelines from the National Kidney Foundation, which have not been specifically validated in patients with HIV-related kidney diseases, recommend a target blood pressure of 125/75 mm Hg or less, as tolerated, for patients with diabetes mellitus, proteinuria, or reduced kidney function; alternatively, the recommended blood pressure goal is 135/85 mm Hg [5]. Non-pharmacologic strategies, especially salt restriction, should be encouraged. Blockade of the renin-angiotensin system may have specific benefits in those hypertensive patients with proteinuria (see the subsection “ACE inhibition” in the section Management). Calcium channel blockers of both the dihydropyridine and nondihydropyridine classes should be used with caution because of their potential interaction with protease inhibitors, which can result in hypotension and possibly in conduction delays [67]. Dietary protein restriction is unproven and should only be attempted under close dietetic supervision.

**Dialysis.** For those patients with ESRD, the epidemiological data [22, 24, 45–49, 68, 69] support the use of dialysis, because HIV-infected subjects requiring either hemodialysis or peritoneal dialysis and receiving HAART are achieving survival rates comparable to those of dialysis patients without HIV infection. Renal replacement therapy can be safely delivered to HIV-infected patients by adhering to the following CDC recommendations [70]. The choice of dialysis modality between hemodialysis and peritoneal dialysis is not a factor in predicting survival among HIV-infected patients with ESRD [71].

The progression of HIVAN to ESRD can be quite rapid, and thus HIV-infected patients with CKD who have chosen hemodialysis should be referred early to a nephrologist and to a surgeon for placement of a native arteriovenous fistula. Native arteriovenous fistulae are the preferred types of access because of excellent patency once established and lower complication rates, compared with those associated with other access options. Studies have shown that thrombus-free survival for native ar-

teriovenous fistulas in HIV-positive patients is comparable to that reported for HIV-negative patients, and infection rates associated with fistulas are lower than those associated with synthetic grafts [72–74]. Patients may need tunneled cuffed catheters for hemodialysis until maturation of the native arteriovenous fistula. HIV infection is not a significant risk factor for tunneled cuff catheter-associated infection, but there may be a higher prevalence of gram-negative bacterial infections among HIV-infected patients [75].

The incidence and spectrum of peritonitis has been reported in several small series of HIV-infected patients receiving peritoneal dialysis. The largest series studied 39 HIV-infected patients receiving peritoneal dialysis and found a higher overall risk of peritonitis and more cases of peritonitis attributed to pseudomonas species and fungi than in other patients with ESRD [49, 69]; these studies were performed prior to the availability of HAART. The higher peritonitis rate in the study could have been due to HIV infection, low socioeconomic status, and/or injection drug use. HIV has been identified in peritoneal dialysate fluid, which should be handled as a contaminated body fluid [76]. Peritoneal dialysis patients should be instructed to pour dialysate into the home toilet and to dispose of dialysate bags and lines by tying them in plastic bags and disposing of the plastic bags in conventional home garbage [77].

**Transplantation.** Deceased donor and living donor kidney transplantation is available for HIV-infected patients through clinical trials or as part of routine care at several transplant centers in the United States. Transplantation had not been widely available to this population until recently because of the potential risks of immunosuppression in the context of HIV disease and HIV-associated mortality itself. Prior to the use of effective antiretroviral therapy, case reports and series reported mixed outcomes in HIV-infected renal transplant recipients, including both rapid HIV progression and long-term survival [78, 79]. With the dramatic reductions in HIV-associated morbidity and mortality observed since the availability of HAART, the safety of immunosuppression in this population has become the more pressing concern. In fact, immunosuppression may have a beneficial impact on patients with HIV infection [80–82] by reducing the pool of activated T cell targets for new infection, decreasing the immune activation characteristic of HIV pathogenesis [83], inhibiting HIV replication [84], and/or interacting synergistically with antiretroviral agents [85, 86].

Preliminary short-term data in case reports and small cohorts of liver, kidney, and heart transplant recipients suggest that patient survival rates may be similar to those in HIV-uninfected transplant recipients, implying that immunosuppression may not be uniquely dangerous in the context of HIV infection [87, 88]. Furthermore, a recent analysis of the USRDS confirmed that mortality in patients receiving cadaveric kidneys in the HAART era had improved dramatically, although black patients

tended to be underrepresented [89]. However, surprisingly high rates of acute and chronic rejection have been observed among HIV-infected kidney transplant recipients, with uncertain etiology at this time [88, 90]. A National Institutes of Health-funded, multicenter study of the safety and efficacy of kidney and liver transplantation in HIV-infected patients is expected to enroll patients through 2007 and to have a follow-up period of 2–5 years. Because solid-organ transplantation in HIV-infected patients is complicated by drug interactions and a complex set of infectious, metabolic, and neoplastic complications related to each condition, clinical management must be provided by a multidisciplinary team of providers who are able to communicate rapidly about evolving signs, symptoms, and laboratory abnormalities.

**Antiretroviral therapy.** Because HIV infection itself appears to be the cause of HIVAN and may contribute to other renal diseases in HIV-infected patients (e.g., immune-complex glomerulonephritides), antiretroviral therapy is a logical choice as a therapy for HIV-related renal diseases. Several reports have suggested limited benefits in renal outcomes associated with zidovudine monotherapy [59, 91, 92] and more-substantial benefits associated with the use of HAART [15, 57, 93–96]. In another analysis, patients who received a protease inhibitor-based regimen, compared with those who either did not receive antiretrovirals or only received a regimen of nucleoside analogues, had a lower rate of decrease in creatinine clearance (0.08 vs 4.3 mL/min per month;  $P = .04$ ) [52]. An additional renal biopsy has demonstrated dramatic improvements in renal histological findings in association with HAART [15]. Unfortunately, after several years of HAART therapy, some patients eventually progress to ESRD through uncertain mechanisms [97]. In addition to being effective in treating established HIVAN, HAART may also potentially decrease the actual incidence of de novo HIVAN [27, 53].

**ACE inhibition.** ACE inhibition has been shown to be protective in a transgenic mouse model of HIVAN [98] and is associated with improved outcomes in several small observational studies involving humans [59, 61, 99]. Its potentially beneficial effects may be related to improved renal hemodynamics, reduced proteinuria, or cytokine modulation. In a case-control study, among 18 patients with biopsy-proven HIVAN, 9 captopril-treated patients had significantly longer mean ( $\pm$ SD) renal survival ( $156 \pm 71$  days) than did 9 nontreated subjects ( $37 \pm 5$  days) [59]. In a follow-up report of an earlier, nonrandomized study [99], the observed median duration of renal survival was 479 days, with only 1 case of ESRD among 28 fosinopril-treated subjects, compared with 146.5 days among the 16 subjects who declined fosinopril ( $P < .001$ ), with all 16 cases progressing to ESRD [61]. An important consideration in the interpretation of these studies is that each is limited in the ability to identify and control for the potential benefits of

antiretroviral medications. A substantial proportion of patients followed-up in each of these studies either did not receive antiretroviral medications or received only monotherapy, which is consistent with the standard of care available when the patients were treated. The resulting inferences are therefore difficult to generalize and are highly susceptible to selection and allocation bias. Although these data support benefit from ACE inhibitors in the absence of antiretroviral therapy or treatment with a single antiretroviral, given the proposed pathobiology of HIVAN and similar observational studies suggesting a benefit from HAART, additional research to assess the effect of full HAART with or without concomitant ACE inhibition on the progression of HIVAN is warranted.

The optimal intensity of therapy, the potential effects of ARBs, and the specific benefits of ACE inhibitors on HIV-related kidney diseases other than HIVAN are unknown. With these caveats, it is reasonable to initiate ACE inhibitors or ARBs as first-line therapy for HIV-infected patients with hypertension and proteinuria (defined as a spot urine protein/creatinine level  $>200$  mg/g), as per K/DOQI recommendations [100], although this remains to be validated in randomized, controlled trials. No recommendations can be made regarding their use among patients with CKD that is not associated with hypertension.

**Corticosteroids.** Several studies have reported significant improvements in renal function and proteinuria for patients with HIVAN receiving corticosteroid therapy in the pre-HAART era [52, 58, 101–103]. In a large retrospective cohort analysis, corticosteroid therapy was associated with an improvement in creatinine clearance over time ( $+3.32$  mL/min per month), compared with a deterioration ( $-5.57$  mL/min per month) in non-corticosteroid treated subjects ( $P = .003$ ) [52]. In another retrospective study, the adjusted RR for ESRD was 0.2 (95% CI, 0.05–0.76;  $P < .05$ ) for 13 subjects who received prednisone, compared with 8 who did not [58]. Furthermore, the risk of serious infection and hospitalization in this study was not significantly different in the corticosteroid-treated patients, although the duration of hospitalization was significantly longer. The strongest evidence for the utility of prednisone therapy comes from a prospective evaluation of 20 consecutive patients with HIVAN who were given prednisone at a dosage of 60 mg/day for 2–11 weeks, followed by a taper over a 2–26-week period. Most of these patients had significant improvement in both renal function and proteinuria. Several patients experienced relapse after discontinuation of corticosteroid therapy, but they then improved with reinstitution of therapy. In a preliminary, retrospective study of the combination of HAART and prednisone in patients with biopsy-proven infection [103], infection rates were reportedly similar among a group of 15 subjects who were treated with HAART and corticosteroids (47%), compared with among a group of 7 patients treated with HAART alone (57%); median time to ESRD in the combination

group (13 months) was markedly better than that in the group treated with HAART alone (6 months).

The optimal duration and intensity of therapy is unknown. Before therapy, underlying infection should be actively ruled out (B-III) and would be a contraindication for immunosuppressive therapy. However, recent data suggest that short-term prednisone therapy given as part of initial therapy for HIV infection itself—especially when combined with HAART and even in those with CD4<sup>+</sup> cell counts of <200 cells/mm<sup>3</sup>—is relatively safe and does not predispose to severe infection [104, 105]. However, the combination of full HAART with short-term prednisone therapy has not been studied in patients with HIVAN. Patients with HIVAN whose kidney function deteriorates despite use of HAART and who are without active infection or active illicit injection drug use (or patients who are considered to be potential transplant candidates) should receive consideration of prednisone therapy at 1 mg per kg of body weight per day (maximum dosage, 80 mg/day) for 2 months, followed by a 2–4 month taper.

**Non-HIVAN renal disease.** The available evidence regarding therapy of HIV-associated renal diseases other than HIVAN is even more anecdotal than that described above. Several case reports have described successful treatment of a heterogeneous group of HIV-related glomerulonephritides with antiretroviral therapy and/or corticosteroids [51, 106–108]. No specific therapeutic recommendations are possible at this time.

## ANTIRETROVIRAL DOSING AND RENAL TOXICITIES

**Recommendation 1.** Appropriate reduction of dosing for antiretrovirals that are primarily renally eliminated is warranted (C-III), with additional doses given after hemodialysis for those drugs that are readily removed by dialysis (B-II).

**Recommendation 2.** Nucleoside analogues should not be withheld in patients with reduced renal function for fear of the development of lactic acidosis (D-III).

**Recommendation 3.** Patients receiving indinavir should drink at least 1.5 L of water daily to prevent stone formation (B-III). Periodic monitoring of renal function and pyuria should be performed during the first 6 months of indinavir therapy and biannually thereafter (B-II), although routine screening for crystalluria is not warranted unless there is a suspicion of nephrolithiasis (B-II). Indinavir need not be withheld from patients with reduced renal function (C-III). In patients who develop indinavir nephrolithiasis, it would be reasonable to restart indinavir therapy once rehydration is achieved (B-III). Patients who develop indinavir-induced hypertension, pyuria, rhabdomyolysis, or renal insufficiency (acute or chronic) should permanently discontinue use of this drug (B-III).

**Recommendation 4.** Patients receiving tenofovir who have a GFR <90 mL/min per 1.73 m<sup>2</sup>, patients receiving other med-

ications eliminated via renal secretion (e.g., adefovir, acyclovir, ganciclovir, or cidofovir), patients with other comorbid diseases (e.g., diabetes or hypertension), or patients receiving ritonavir-boosted protease inhibitor regimens should be monitored at least biannually for measurements of renal function, serum phosphorus, and urine analysis for proteinuria and glycosuria (B-III).

### HIV Antiretroviral Dosing Recommendations

A summary of dosing recommendations for patients with CKD/ESRD is provided in table 3. Although reduced dosing of several antiretrovirals is advised for the patient with renal dysfunction, it should be noted that there is little clinical evidence that this actually prevents the development of toxicities while maintaining full virologic efficacy. For instance, lamivudine given in normal doses to patients with renal insufficiency does not seem to cause any obvious toxicities [119, 154]. However, because of the increasing concern for drug-drug interaction in patients with renal insufficiency [155] that may not be anticipated without more clinical data, reduced dosing is still advised.

The need to adjust the dosing of antiretrovirals in the patient with CKD is underappreciated by HIV caregivers [20]. Because the nucleoside and nucleotide reverse-transcriptase inhibitors (NRTIs) are primarily excreted by the kidneys, reduced dosage is required in those with impaired renal function, especially for drugs like didanosine and stavudine, which require further reduction because their pharmacokinetics are influenced by weight. Furthermore, because the medications in this class are neither tightly protein-bound nor have a high molecular weight, they may be easily removed by dialysis. Therefore, NRTIs in general should be administered after dialysis (although extra dosing to supplement the potential loss during dialysis is usually not required). The exception to this is abacavir, which has relatively low urinary excretion, is more tightly protein-bound, and has more-extensive hepatic metabolism. Therefore, dosing adjustment for this drug in patients with renal insufficiency is not necessary, although it should still be administered after hemodialysis to minimize drug loss [120]. Providers are advised to reduce the dose of lamivudine in patients with CKD, but somewhat higher doses may be given (e.g., 100-mg tablets may be given instead of 25–50-mg tablets to avoid prescribing the drug in liquid form if this suits patient preference or if this formulation is not readily available). It should also be noted that the lower drug dosing recommendations for tenofovir are intended for patients with stable CKD and not for those whose renal function deteriorates as a result of tenofovir-related nephrotoxicity or some other acute insult. Data on the safety and efficacy of tenofovir in HIV-infected patients with creatinine clearances of <50 mL/min are currently unavailable, although studies are underway to address this important question.

On the other hand, the nonnucleoside reverse-transcriptase inhibitors (NNRTIs), protease inhibitors (PIs), and fusion in-

**Table 3. Dosing of antiretroviral drugs for HIV-infected adults with chronic kidney disease (CKD) or end-stage renal disease (ESRD).**

Antiretroviral drug, dosing category	Dosage	Rating <sup>a</sup>	Reference(s)
Nucleoside reverse-transcriptase inhibitors			
Zidovudine <sup>b</sup>			
Usual dosage	300 mg po b.i.d.	B-II	[109–116]
Dosage for patients with CKD or ESRD			
Creatinine clearance ≥15 mL/min	No adjustment		
Creatinine clearance <15 mL/min	100 mg po q6–8h		
Receiving hemodialysis	100 mg po q6–8h <sup>c</sup>		
Receiving peritoneal dialysis	100 mg po q6–8h		
Lamivudine <sup>b</sup>			
Usual dosage	150 mg po b.i.d./300 mg po q.d.	B-I	[117–119]
Dosage for patients with CKD or ESRD			
Creatinine clearance ≥50 mL/min	No adjustment		
Creatinine clearance 30–49 mL/min	150 mg po q.d.		
Creatinine clearance 15–29 mL/min	150 mg po first dose, then 100 mg po q.d.		
Creatinine clearance 5–14 mL/min	150 mg po first dose, then 50 mg po q.d.		
Creatinine clearance <5 mL/min	50 mg po first dose, then 25 mg po q.d.		
Receiving hemodialysis	50 mg po first dose, then 25 mg po q.d. <sup>c</sup>		
Receiving peritoneal dialysis	50 mg po first dose, then 25 mg po q.d.		
Abacavir <sup>d</sup>			
Usual dosage	300 mg po b.i.d./600 mg po q.d.	B-I	[120]
Dosage for patients with CKD or ESRD			
All creatinine clearances	No adjustment		
Receiving hemodialysis	No adjustment <sup>c</sup>		
Receiving peritoneal dialysis	Unknown, use with caution		
Stavudine immediate release (IR)			
Body weight ≥60 kg			
Usual dosage	40 mg po b.i.d.	B-II	[121]
Dosage for patients with CKD or ESRD			
Creatinine clearance >50 mL/min	No adjustment		
Creatinine clearance 26–50 mL/min	20 mg po b.i.d.		
Creatinine clearance ≤25 mL/min	20 mg po q.d.		
Receiving hemodialysis	20 mg po q.d. <sup>c</sup>		
Receiving peritoneal dialysis	Unknown, use with caution		
Body weight <60 kg			
Usual dosage	30 mg po b.i.d.		
Dosage for patients with CKD or ESRD			
Creatinine clearance >50 mL/min	No adjustment		
Creatinine clearance 26–50 mL/min	15 mg po b.i.d.		
Creatinine clearance ≤25 mL/min	15 mg po b.i.d.		
Receiving hemodialysis	15 mg po q.d. <sup>c</sup>		
Receiving peritoneal dialysis	Unknown, use with caution		
Stavudine XR			
Body weight ≥60 kg			
Usual dosage	100 mg po q.d.	C-III	[122]
Dosage for patients with CKD or ESRD			
Creatinine clearance >50 mL/min	No dose adjustment		
Creatinine clearance ≤50 mL/min	Unknown, use stavudine IR		
Body weight <60 kg			
Usual dosage	75 mg po q.d.		
Dosage for patients with CKD or ESRD			
Creatinine clearance >50 mL/min	No dose adjustment		
Creatinine clearance ≤50 mL/min	Unknown, use stavudine IR		

(continued)

**Table 3. (Continued.)**

Antiretroviral drug, dosing category	Dosage	Rating <sup>a</sup>	Reference(s)
Didanosine buffered tablets		B-II	[123, 124]
Body weight ≥60 kg			
Usual dosage	200 mg po b.i.d.		
Dosage for patients with CKD or ESRD			
Creatinine clearance ≥60 mL/min	No adjustment		
Creatinine clearance 30–59 mL/min	200 mg po q.d.		
Creatinine clearance 10–29 mL/min	150 mg po q.d.		
Creatinine clearance <10 mL/min	100 mg po q.d.		
Receiving hemodialysis	100 mg po q.d. <sup>c</sup>		
Receiving peritoneal dialysis	100 mg po q.d.		
Body weight <60 kg			
Usual dosage	125 mg po b.i.d.		
Dosage for patients with CKD or ESRD			
Creatinine clearance ≥60 mL/min	No adjustment		
Creatinine clearance 30–59 mL/min	150 mg po q.d.		
Creatinine clearance 10–29 mL/min	100 mg po q.d.		
Creatinine clearance <10 mL/min	75 mg po q.d.		
Receiving hemodialysis	75 mg po q.d. <sup>c</sup>		
Receiving peritoneal dialysis	75 mg po q.d.		
Didanosine EC		B-II	[123–125]
Body weight >60kg			
Usual dosage	400 mg po q.d.		
Dosage for patients with CKD or ESRD			
Creatinine clearance ≥60 mL/min	No adjustment		
Creatinine clearance 30–59 mL/min	200 mg po q.d.		
Creatinine clearance 10–29 mL/min	125 mg po q.d.		
Creatinine clearance <10 mL/min	125 mg po q.d.		
Receiving hemodialysis	125 mg po q.d. <sup>c</sup>		
Receiving peritoneal dialysis	125 mg po q.d.		
Body weight <60 kg			
Usual dosage	250 mg po q.d.		
Dosage for patients with CKD or ESRD			
Creatinine clearance ≥60 mL/min	No adjustment		
Creatinine clearance 30–59 mL/min	125 mg po q.d.		
Creatinine clearance 10–29 mL/min	125 mg po q.d.		
Creatinine clearance <10 mL/min	Do not use; use buffered tablets instead		
Receiving hemodialysis	Do not use; use buffered tablets instead		
Receiving peritoneal dialysis	Do not use; use buffered tablets instead		
Zalcitabine		B-II	[126]
Usual dosage	0.75 mg po t.i.d.		
Dosage for patients with CKD or ESRD			
Creatinine clearance ≥40 mL/min	No adjustment		
Creatinine clearance 10–40 mL/min	0.75 mg po q12h		
Creatinine clearance <10 mL/min	0.75 mg po q24h		
Receiving hemodialysis	Unknown, use with caution <sup>c</sup>		
Receiving peritoneal dialysis	Unknown, use with caution		
Emtricitabine		B-II	[127]
Usual dosage	200 mg po q.d.		
Dosage for patients with CKD or ESRD			
Creatinine clearance ≥50 mL/min	No adjustment		
Creatinine clearance 30–49 mL/min	200 mg po q48h		
Creatinine clearance 15–29 mL/min	200 mg po q72h		
Creatinine clearance <15 mL/min	200 mg po q96h		
Receiving hemodialysis	200 mg po q96h <sup>c</sup>		
Receiving peritoneal dialysis	Unknown, use with caution		

(continued)

**Table 3. (Continued.)**

Antiretroviral drug, dosing category	Dosage	Rating <sup>a</sup>	Reference(s)
Tenofovir		B-II	[128, 129]
Usual dosage	300 mg po q.d.		
Dosage for patients with CKD or ESRD			
Creatinine clearance $\geq$ 50 mL/min	No adjustment		
Creatinine clearance 30–49 mL/min	300 mg po q48h		
Creatinine clearance 10–29 mL/min	300 mg po q72h		
Receiving hemodialysis	300 mg po every 7 days <sup>c</sup>		
Receiving peritoneal dialysis	Unknown, use with caution		
Emtricitabine/tenofovir		C-III	[130]
Usual dosage	200 mg/300 mg po q.d.		
Dosage for patients with CKD or ESRD			
Creatinine clearance $\geq$ 50 mL/min	No adjustment		
Creatinine clearance 30–49 mL/min	One tab po q48h		
Creatinine clearance <30 mL/min	Unknown, should not use combination tablet		
Nonnucleoside reverse-transcriptase inhibitors			
Nevirapine		B-II	[131–135]
Usual dosage	200 mg po b.i.d.		
Dosage for patients with CKD or ESRD			
Creatinine clearance >20 mL/min	No adjustment		
Receiving hemodialysis	No adjustment <sup>c</sup>		
Receiving peritoneal dialysis	Unknown, use with caution		
Efavirenz		C-III	[136–138]
Usual dosage	600 mg po q.d.		
Dosage for patients with CKD or ESRD	No adjustment		
Delavirdine		C-III	[139]
Usual dosage	400 mg po t.i.d.		
Dosage for patients with CKD or ESRD	No adjustment		
Protease inhibitors			
Indinavir		C-III	[140, 141]
Usual dosage	800 mg po t.i.d.		
Dosage for patients with CKD or ESRD	No adjustment		
Saquinavir soft gel		C-III	[132, 142, 143]
Usual dosage	1200 mg po t.i.d.		
Dosage for patients with CKD or ESRD	No adjustment		
Saquinavir hard gel		C-III	[132, 142, 144]
Usual dosage	600 mg po t.i.d.		
Dosage for patients with CKD or ESRD	No adjustment		
Nelfinavir		C-III	[133, 145, 146]
Usual dosage	1250 mg po b.i.d.		
Dosage for patients with CKD or ESRD	No adjustment		
Amprenavir		C-III	[147]
Usual dosage	1200 mg po b.i.d.		
Dosage for patients with CKD or ESRD	No adjustment		
Fosampenavir		C-III	[148]
Usual dosage	1400 mg po q.d./700 mg po b.i.d.		
Dosage for patients with CKD or ESRD	No adjustment		
Ritonavir		C-III	[135, 142, 149]
Usual dosage	600 mg po b.i.d.		
Dosage for patients with CKD or ESRD	No adjustment		
Lopinavir/ritonavir		C-III	[150, 151]
Usual dosage	400 mg/100 mg po b.i.d.		
Dosage for patients with CKD or ESRD	No adjustment		

*(continued)*

**Table 3. (Continued.)**

Antiretroviral drug, dosing category	Dosage	Rating <sup>a</sup>	Reference(s)
Atazanavir		C-III	[152]
Usual dosage	400 mg po q.d.		
Dosage for patients with CKD or ESRD	No adjustment		
Entry/fusion inhibitors			
Enfuvirtide		B-II	[153]
Usual dosage	90 mg sc b.i.d.		
Dosage for patients with CKD or ESRD			
Creatinine clearance $\geq$ 35 mL/min	No adjustment		
Creatinine clearance <35 mL/min	Unknown, use with caution		

<sup>a</sup> The rating is for the recommendations on dose adjustment for patients with reduced renal function.

<sup>b</sup> Zidovudine/lamivudine (Combivir; GlaxoSmith Kline) should be administered as separate component medications in patients with creatinine clearance <50 mL/min.

<sup>c</sup> Administer either the daily dose or one of the daily doses after hemodialysis.

<sup>d</sup> Zidovudine/lamivudine/abacavir (Trizivir; GlaxoSmith Kline) and lamivudine/abacavir (Epzicom; GlaxoSmith Kline) should be administered as separate component medications in patients with creatinine clearance <50 mL/min.

hibitors are, in general, much more tightly bound to plasma proteins and are primarily metabolized by the liver. Furthermore, the NNRTIs and PIs have high molecular weights and are excreted into the urine in low amounts. These empirical findings suggest that dose adjustment for NNRTIs and PIs in patients with CKD is not required, although little data are available to support this general conclusion. Nevirapine and indinavir, however, do not fully share the drug properties of the other NNRTI and PI medications. Because of nevirapine's relatively low molecular weight and protein-binding fraction, it has been suggested that dialysis may remove substantial amounts of this drug [133, 134]. Therefore, a 200-mg dose of nevirapine should be administered after dialysis [131]. Indinavir's plasma protein-binding fraction is also lower than those of other PIs, and 10% of unchanged drug is excreted in the urine. However, several case reports have demonstrated no appreciable change in indinavir's pharmacokinetic parameters, although it may be prudent to initiate hemodialysis at the end of a dosing interval [140, 141]. Dose adjustments for ritonavir-boosted PI combinations should not be necessary, but this also has not been fully evaluated.

#### Renal Dosing of Antibiotics Commonly Used in HIV Care

Many of the antimicrobials commonly used to prevent and treat opportunistic infections such as *Pneumocystis jiroveci* pneumonia, *Toxoplasma* encephalitis, and *Mycobacterium avium intracellulare* infections require dose reduction in the HIV-infected patient with CKD because of their renal elimination. Recommended dosing data for these drugs are available in table 4. Of note, trimethoprim and pyrimethamine reduce renal secretion of creatinine and may subsequently cause elevation of the serum creatinine level even without actual decrement in renal function; in this situation, the clinician is advised to estimate creatinine clearance using a 24-h urine collection (rather than an estimating formula) to make decisions regarding dose

adjustments. If dapsone is chosen for *Pneumocystis* prophylaxis in patients requiring hemodialysis, the dose should be adjusted to 50 mg po bid, with at least 1 of the doses given after dialysis (David P. Jacobus, personal communication).

#### Renal Effects of Commonly Used Medications in HIV Care

**Nonantiretrovirals.** Several drugs used in the treatment of HIV-infected persons may cause ARE. Amphotericin B, cidofovir, foscarnet, pentamidine, and high-dose acyclovir have known nephrotoxic potential and should be administered under close supervision. Amphotericin B causes renal effects in up to 80% of treated patients, including hypokalemia, bicarbonaturia, renal tubular acidosis, decreases in renal erythropoietin and anemia, and elevations in the serum creatinine level. Lipid-associated formulations of amphotericin B are less nephrotoxic than conventional amphotericin B; one of the indications for their use is for patients who develop elevations in serum creatinine level (above 2.5 mg/dL) while receiving conventional amphotericin B [156]. Cidofovir causes dose-dependent nephrotoxicity (including glycosuria, bicarbonaturia, phosphaturia, polyuria, and nephrogenic diabetes insipidus) that is reduced by coadministration of intravenous hydration and probenecid, which prevents the active uptake of cidofovir at the basolateral surface of the proximal tubule [157]. Cidofovir is contraindicated in patients with preexisting creatinine clearance of <55 mL/min or a urine protein level  $\geq$ 2+ (100 mg/dL) on urine dipstick. Urine protein and serum creatinine levels should be monitored within 48 h before each dose; cidofovir should be discontinued if the serum creatinine level increases by  $\geq$ 0.5 mg/dL above baseline values or if a urine protein level of  $\geq$ 3+ develops. Renal toxicity is the major side effect of foscarnet use and can be reduced with intravenous saline or 5% dextrose solution hydration before and during slow infusion. Foscarnet administration is associated with hypocalcemia, hypophosphatemia, hyperphosphatemia, hypomagnese-

**Table 4. Dosing of antimicrobial agents for patients with HIV infection and patients with HIV infection and chronic kidney disease (CKD) or end-stage renal disease (ESRD).**

Drug, dosing category	Dosage
Acyclovir	
Normal dosing	200–800 mg po 5 times per day; 5–12.4 mg per kg of body weight iv q8h
Dosage for patients with CKD or ESRD	
Creatinine clearance <10 mL/min	200 mg q12h
Creatinine clearance 10–50 mL/min	5–12.4 mg per kg of body weight q12–24h
Creatinine clearance <10 mL/min	2.5–5 mg per kg of body weight q24h
Receiving hemodialysis	Additional dose after each dialysis
Adefovir	10 mg po q24h
Usual dosage	
Dosage for patients with CKD or ESRD	
Creatinine clearance 20–59 mL/min	10 mg q48h
Creatinine clearance 10–19 mL/min	10 mg q72h
Receiving hemodialysis	10 mg every 7days following dialysis
Amphotericin B deoxycholate	
Usual dosage	20–50 mg iv q24h
Dosage for patients with CKD or ESRD	
Creatinine clearance >50 mL/min	20–50 mg iv q24h
Creatinine clearance 10–50 mL/min	20–50 mg iv q24h
Creatinine clearance <10 mL/min	20–50 mg iv q24–36h
Receiving hemodialysis	20–50 mg iv q24h
Amphotericin B colloidal dispersion	
Usual dosage	3.0–6.0 mg per kg of body weight iv q24h
Dosage for patients with CKD or ESRD	
Creatinine clearance >50 mL/min	3.0–6.0 mg per kg of body weight iv q24h
Creatinine clearance 10–50 mL/min	3.0–6.0 mg per kg of body weight iv q24h
Creatinine clearance <10 mL/min	3.0–6.0 mg per kg of body weight iv q24–36h
Receiving hemodialysis	3.0–6.0 mg per kg of body weight iv q24h
Amphotericin B liquid complex	
Usual dosage	5 mg per kg of body weight iv q24h
Dosage for patients with CKD or ESRD	
Creatinine clearance >50 mL/min	5 mg per kg of body weight iv q24h
Creatinine clearance 10–50 mL/min	5 mg per kg of body weight iv q24h
Creatinine clearance <10 mL/min	5 mg per kg of body weight iv q24–36h
Receiving hemodialysis	5 mg per kg of body weight iv q24h
Amphotericin B liposomal	
Usual dosage	3.0–5.0 mg per kg of body weight iv q24h
Dosage for patients with CKD or ESRD	
Creatinine clearance >50 mL/min	3.0–5.0 mg per kg of body weight iv q24h
Creatinine clearance 10–50 mL/min	3.0–5.0 mg per kg of body weight iv q24h
Creatinine clearance <10 mL/min	3.0–5.0 mg per kg of body weight iv q24–36h
Receiving hemodialysis	3.0–5.0 mg per kg of body weight iv q24h
Cidofovir	
Usual dosage	5 mg per kg of body weight iv every other week (with probenecid and hydration)
Dosage for patients with CKD or ESRD	
Increase in serum creatinine level to 0.3–0.4 above baseline	3 mg per kg of body weight iv every other week (with probenecid and hydration)
Increase in serum creatinine level to $\geq$ 0.5 above baseline or development of grade 3+ proteinuria	Discontinue
Baseline serum creatinine level >1.5, creatinine clearance $\leq$ 55 mL/min, or grade $\geq$ 2+ proteinuria	Not recommended

(continued)

**Table 4. (Continued.)**

Drug, dosing category	Dosage
<b>Ciprofloxacin</b>	
Usual dosage	500 mg po q12h
Dosage for patients with CKD or ESRD	
Creatinine clearance 30–50 mL/min	250–500 mg q12h
Creatinine clearance <30 mL/min	250–500 mg q18h
Receiving hemodialysis	250–500 mg after dialysis
<b>Clarithromycin</b>	
Usual dosage	500 mg po q12h
Dosage for patients with CKD or ESRD	Reduce dose by one-half or double interval if creatinine clearance <30 mL/min
<b>Ethambutol</b>	
Usual dosage	15–25 mg per kg of body weight po q24h
Dosage for patients with CKD or ESRD	
Creatinine clearance 10–50 mL/min	15–25 mg per kg of body weight po q24–36h
Creatinine clearance <10 mL/min	15–25 mg per kg of body weight po q48h
<b>Famciclovir</b>	
Usual dosage	250–500 mg po q12h
Dosage for patients with CKD or ESRD	
Creatinine clearance 20–39 mL/min	125 mg–250 mg q12h
Creatinine clearance <20 mL/min	125 mg–250 mg q24h
Receiving hemodialysis	125 mg after each dialysis
<b>Fluconazole</b>	
Usual dosage	50–400 mg po q24h
Dosage for patients with CKD or ESRD	
Creatinine clearance <50 mL/min	1/2 dose
Receiving hemodialysis	Full dose after dialysis
<b>Foscarnet</b>	
Usual dosage	90–120 mg per kg of body weight iv q24h
Dosage for patients with CKD or ESRD	
Creatinine clearance >1.4 mL/min per kg of body weight	Low dose, 90 mg q24h; high dose, 120 mg q24h
Creatinine clearance 1.0–1.4 mL/min per kg of body weight	Low dose, 70 mg q24h; high dose, 90 mg q24h
Creatinine clearance 0.8–1.0 mL/mg per kg of body weight	Low dose, 50 mg q24h; high dose, 65 mg q24h
Creatinine clearance 0.6–0.8 mL/mg per kg of body weight	Low dose, 80 mg q48h; high dose, 104 mg q48h
Creatinine clearance 0.5–0.5 mL/mg per kg of body weight	Low dose, 60 mg q48h; high dose, 80 mg q48h
Creatinine clearance 0.4–0.5 mL/mg per kg of body weight	Low dose, 50 mg q48h; high dose, 65 mg q48h
Creatinine clearance <0.4 mL/mg per kg of body weight	Not recommended
<b>Ganciclovir</b>	
Usual dosage	Capsules: 1 g po q8h; intravenous dosing: 5 mg per kg of body weight iv q.d. or 6 mg per kg of body weight iv q24h 5 days per week
Dosage for patients with CKD or ESRD	
Creatinine clearance 50–69 mL/min	Capsules: 1500 mg q.d. or 500 mg t.i.d.; intravenous dosing: 2.5 mg per kg of body weight iv q24h
Creatinine clearance 25–49 mL/min	Capsules: 1000 mg q.d. or 500 mg b.i.d.; intravenous dosing: 1.25 mg per kg of body weight iv q24h
Creatinine clearance 10–24 mL/min	Capsules: 500 mg q.d.; intravenous dosing: 0.625 mg per kg of body weight iv q24h
Creatinine clearance <10 mL/min	Capsules: 500 mg 3 times per week after dialysis; intravenous dosing: 0.625 mg per kg of body weight iv 3 times per week
<b>Isoniazid</b>	
Usual dosage	300 mg po q24h
Dosage for patients with CKD or ESRD	Additional dose after dialysis

*(continued)*

**Table 4. (Continued.)**

Drug, dosing category	Dosage
Levofloxacin	
Usual dosage	250–500 mg po q24h
Dosage for patients with CKD or ESRD	
Creatinine clearance 50–80 mL/min	500-mg loading dose, then 250 mg q24h
Creatinine clearance <50 mL/min	500-mg loading dose, then 250 mg q48h
Pentamidine	
Usual dosage	4.0 mg per kg of body weight iv q24h
Dosage for patients with CKD or ESRD	
Creatinine clearance 10–50 mL/min	4.0 mg per kg of body weight iv q24h
Creatinine clearance <10 mL/min	4.0 mg per kg of body weight iv q24h–36h
Pyrazinamide	
Usual dosage	25–30 mg per kg of body weight q24h
Dosage for patients with CKD or ESRD	
Creatinine clearance <10 mL/min	50%–100% of the full dose q24h
Receiving hemodialysis	25–30 mg per kg of body weight after dialysis
Ribavirin	
Usual dosage	200 mg po q8h
Dosage for patients with CKD or ESRD	
Creatinine clearance ≥10 mL/min	200 mg po q8h
Creatinine clearance <10 mL/min	Additional dose after dialysis
Rifampin	
Usual dosage	600 mg po q24h
Dosage for patients with CKD or ESRD	
Creatinine clearance 10–50 mL/min	50%–100% of full dose
Creatinine clearance <10 mL/min	50%–100% of full dose
Receiving hemodialysis	50%–100% of full dose; no supplement
Receiving peritoneal dialysis	50%–100% of full dose; extra 50%–100% of full dose after receipt of peritoneal dialysis
Trimethoprim-sulfamethoxazole	
Usual dosage	1 double-strength dose po q24h; 1 double-strength dose po 3 times per week; 1 single-strength dose po q24h
Dosage for patients with CKD or ESRD	
Creatinine clearance 15–30 mL/min	1/2 dose
Creatinine clearance <15 mL/min	1/2 dose or use alternative agent
Dosage for treatment of <i>Pneumocystis jiroveci</i> pneumonia	
In patients without CKD or ESRD	3–5 mg iv per kg of body weight q6–8h (as trimethoprim)
In patients with CKD or ESRD	
Creatinine clearance 10–50 mL/min	3–5 mg per kg of body weight q12h
Creatinine clearance <10 mL/min	3–5 mg per kg of body weight q24h
Valacyclovir	
Usual dosage	500 mg–1g po q8h
Dosage for patients with CKD or ESRD	
Creatinine clearance ≥30 mL/min	500 mg–1g po q8h
Creatinine clearance <30 mL/min	500 mg q24–48h
Valganciclovir	
Usual dosage	900 mg po q24h
Dosage for patients with CKD or ESRD	
Creatinine clearance 40–59 mL/min	450 mg q.d.
Creatinine clearance 25–39 mL/min	450 mg q.d.
Creatinine clearance 10–24 mL/min	450 mg twice per week
Creatinine clearance <10 mL/min	Not recommended
Receiving hemodialysis	Not recommended

mia, and hypokalemia. Impaired baseline renal function, low total serum calcium level, and underlying CNS conditions were risk factors associated with seizures during foscarnet treatment. Determination of creatinine clearance and measurement of electrolytes are recommended at baseline, 2–3 times per week during induction therapy, and every 1–2 weeks during maintenance therapy. Acyclovir, ciprofloxacin, foscarnet, and sulfonamides can cause intratubular precipitation of crystals leading to ARF; avoidance of rapid intravenous bolus and hydration are recommended, as well as adjustment for renal dysfunction [158].

**Antiretrovirals.** One study has suggested an association between reduced kidney function (creatinine clearance, <70 mL/min) and the development of lactic acidosis in patients receiving NRTIs [159], although withholding this valuable class of medications for fear of a relatively uncommon side effect seems unwarranted without further long-term study. Although ritonavir [160, 161] has occasionally been reported to cause ARF, most documented cases of ARF due to currently used antiretrovirals are due to indinavir and tenofovir.

**Indinavir.** Nephrolithiasis is the major side effect of indinavir therapy [162, 163]. Although it is mainly metabolized (80%) in the liver, its pH-based solubility in urine makes renal excretion extremely important. Kopp et al. [164] reported that indinavir crystalluria is associated with a novel syndrome that consists primarily of back or flank pain and renal parenchymal filling defects on CT scan but without nephrolithiasis. They also reported symptomatic patients with crystalluria, dysuria, and urgent urination; asymptomatic crystalluria occurred in 20% of indinavir-treated patients. Pyuria (but not necessarily crystalluria) secondary to treatment with indinavir has been associated with gradual loss of renal function unrelated to obstructive symptoms [165]. Risk factors include low lean-body mass, indinavir regimens of  $\geq 1000$  mg administered twice daily, concomitant use of trimethoprim-sulfamethoxazole [163, 166], and coinfection with either hepatitis B or C [167, 168]. Environmental conditions, including temperature, atmospheric pressure, and humidity, affect the risk of developing indinavir nephrolithiasis [163, 169]. Ritonavir-boosted indinavir regimens may lead to higher risk of nephrolithiasis, with higher indinavir peak concentrations being associated with development of urologic symptoms [170], as well as to rhabdomyolysis-induced renal failure [171]. In addition, the highest incidence of urologic symptoms occurred during the first 6 months of indinavir treatment. Symptoms continue to occur after this period but at a slower rate [163]. Fortunately, most cases of ARF secondary to indinavir resolve with discontinuation of the drug. On suspicion of indinavir nephrotoxicity, urine should be inspected for the presence of crystals and pyuria [172]. Indinavir has also been associated with hypertension [173], renal atrophy [174], interstitial nephritis [175, 176], development of renal failure associated with fever and rash [177], and

persistent leukocyturia with renal failure [178, 179]. A daily intake of at least 1.5 liters of water usually prevents stone formation, especially in those with the risk factors outlined above. There is little risk of recurrent nephrolithiasis or ARF associated with dehydration if indinavir therapy is restarted once rehydration is achieved. Indinavir should not be withheld in patients with severe kidney disease for fear of increased risk of nephrolithiasis because little of the drug will actually reach the collecting system. For patients who develop recurrent indinavir nephrolithiasis thought to be due to high drug levels secondary to ritonavir-boosting effects, there is no evidence that restarting indinavir therapy without ritonavir therapy (i.e., indinavir administered at 800 mg every 8 h) in patients without other antiretroviral options results in recurrent nephrolithiasis. It should be noted that renal adverse effects may occur during long-term indinavir therapy or after discontinuation of indinavir therapy [180].

**Tenofovir.** Proximal renal tubule toxicity has been described in patients receiving the antiviral acyclic nucleoside phosphonate class of medications, including adefovir and cidofovir. These drugs are excreted primarily as unchanged drug in the urine. Renal toxicity occurs with accumulation of these compounds in the proximal tubule and appears to be concentration dependent [181]. When administered at doses required for HIV treatment [182], adefovir dipivoxil caused unacceptably high rates of nephrotoxicity characterized by the Fanconi syndrome (renal failure, hypokalemia, hypophosphatemia, metabolic acidosis, albuminuria/proteinuria, hyperaminoaciduria, glucosuria, calciuria, and phosphate and potassium wasting). However, at the lower dose approved for the treatment of hepatitis B virus infection, renal failure rates appear low [183, 184]. Tenofovir was not associated with higher rates of renal failure in initial treatment studies [185, 186], although patients with preexisting renal dysfunction were not included. Accumulating cohort study data for tenofovir in general use have shown quite low incidence rates of renal failure, on the order of 0.5%–1.5% [187, 188]. However, several case reports and small case series of patients developing Fanconi syndrome after initiating tenofovir-containing regimens (which then resolved or improved with discontinuation of the use of tenofovir) have been and continue to be published [189–195], suggesting that there may be specific risk factors for the few patients who develop tenofovir-related nephrotoxicity.

Most of the cases described in the literature occurred in subjects who were receiving prolonged courses of tenofovir plus ritonavir-containing combination therapy (including lopinavir, saquinavir, atazanavir, and amprenavir) salvage regimens [189, 190, 192, 193]. Pharmacokinetic analysis showed that tenofovir exposure was increased by 32% when administered with lopinavir/ritonavir therapy, compared with when administered alone [196]. It is postulated, although not proven, that ritonavir

blocks the MRP-2 transporter on the apical side of the kidney proximal tubule, and thus prevents excretion of intracellular tenofovir into the urine [189]. The higher concentration of tenofovir that results may then cause proximal tubule necrosis and denuding of the basement membrane. Data from an ongoing study of tenofovir administered in combination with lopinavir/ritonavir [197] suggest that renal toxicity involving the proximal tubule occurred in only 1 of 190 subjects during the first 48 weeks of therapy; notably, this subject had a baseline creatinine clearance of 40 mL/min and was receiving full-dose tenofovir therapy. Alternatively, the association between the use of tenofovir with ritonavir-boosted protease inhibitors and Fanconi syndrome may simply be a marker of patients in deep salvage therapy with more longstanding HIV infection that could, in general, lead to a higher incidence of nephropathy. This is supported by a cohort study [188] that suggests that renal toxicity occurs primarily in patients with more-severe HIV disease and longer overall antiretroviral treatment duration. Reynes et al. [198] further reported, in their series of 74 patients receiving tenofovir therapy, that Fanconi syndrome developed in 3 patients, with an estimated incidence of 4 cases per 100 patient-years of tenofovir treatment. Risk factors in this study included preexisting renal dysfunction, low body weight, and long duration of tenofovir use [194]. Prior exposure to high-dose adefovir dipivoxil does not appear to be associated with an increased risk of nephrotoxicity [187]. As is the case with indinavir, tenofovir-induced renal failure appears to improve with discontinuation of treatment with the drug.

## HIV INFECTION AND CKD IN THE PEDIATRIC AND ADOLESCENT POPULATIONS

**Recommendation 1.** In children without evidence of existing renal disease, screening evaluation for the development of HIVAN is similar to that proposed earlier for adults and should include complete urinalysis and testing to determine serum electrolyte levels, blood urea nitrogen levels, and creatinine levels every 6 months (C-III).

**Recommendation 2.** Pediatric HIVAN and other proteinuric nephropathies in HIV-infected children should be treated with HAART; referral to a nephrologist and the addition of ACE-inhibition should also be considered for patients with more-severe proteinuria (grade  $\geq 1+$  by urine dipstick analysis or a protein-to-creatinine ratio  $\geq 0.2$  g/g for 3 separate specimens) (C-III). Steroid use is not recommended for this population (D-II).

**Epidemiology.** The 2002 CDC HIV/AIDS Surveillance Report estimated that there were 3219 pediatric cases of HIV infection in American children <13 years of age, with 41,000 infected patients between the ages of 13 and 24 years. These numbers were generated to reflect cases in 30 areas with required reporting of HIV infection and are likely to be an un-

derestimation of infection nationwide. The incidence of HIV-associated kidney disease in these children is estimated to be 2%–5% [199–201]. In addition, 5% of deaths in HIV-infected children are reported secondary to kidney disease [202]. The Pediatric AIDS Clinical Trials Group (PACTG) has attempted to estimate the prevalence of renal disease in pediatric patients with HIV infection. Analysis of the PACTG 219C Late Outcomes Study databases (Russ Van Dyke, unpublished data) suggests that 2%–3% of subjects have a renal diagnosis consistent with HIV nephropathy and that up to 6% may have renal disease as determined principally by laboratory evaluation. Of 145 subjects, 48% had hypokalemia, 33% had elevated blood urea nitrogen levels, 17% had elevated creatinine levels, and 14% had low serum albumen values. Proteinuria was detected on  $>2$  occasions in 29% of subjects. Among subjects in the PACTG database, 44 patients, most of whom were black, had diagnoses consistent with HIV nephropathy. Concerns exist that these numbers underestimate the prevalence of renal disease because of the possibility that there are other children with moderate-to-severe renal disease being cared for at clinical sites who have never been enrolled in a PACTG study (Warren Andiman, personal communication).

In-progress analysis of a pediatric database at the University of Miami demonstrates that 77 of 284 HIV-infected children included in the database were found to have persistent proteinuria, defined as urinary protein-to-creatinine ratios of  $>0.2$  g/g. Another 34 children had HIVAN, defined according to the clinical criteria of persistent proteinuria plus changes in radiographic or scintigraphic findings consistent with the diagnosis. Of these 34 children, the nephrotic syndrome developed in 7 (21%), and 14 (42%) progressed to chronic renal insufficiency. The severity of HIVAN correlated with persistently high viral loads, although 1 patient developed overt HIVAN despite good viral control (C.D. Mitchell, unpublished data). The University of Miami database, analyzed by retrospective chart review from January 1998 through January 2001, determined that 13.6% of pediatric HIV-infected patients who were receiving HAART had HIVAN; these data were not appreciably different from the reported pre-HAART prevalence of 10%–15% [203].

Progression to ESRD in children is highly dependent on the histopathological diagnosis. FSGS denotes a poor prognosis, with rapid progression to ESRD within 1 year after presentation. There is a high mortality rate associated with the FSGS diagnosis, with cause of death usually unrelated to renal disease [204]. In one report, the median time from clinical detection of nephropathy to severe renal failure was 9 months (range, 1–27 months) [205]. Another report compared children with AIDS with or without associated nephropathy. All children with AIDS and nephropathy ( $n = 16$ ) died during the 10-year study period, with a mean survival time of 9.5 months after renal disease was diagnosed. Thirty-two (70%) of 56 children without

nephropathy were alive at the end of the study period. FSGS was the most common renal lesion in this series, diagnosed in 6 of 13 children who underwent renal biopsy [206]. A report describing the experience in the Washington, D.C., area from 1985–1997 determined a mortality rate of 82% among their pediatric patients with HIVAN during the study interval; the majority died before reaching ESRD [200]. Of 15 children with nephrotic syndrome who were followed-up from 1984 through 1990 in Brooklyn, New York, 30% experienced ESRD within 8 months after diagnosis, with successful peritoneal dialysis performed for 3 children. However, 80% died from HIV-related complications during the study interval [201]. A recent report by Ahuja et al. [207] analyzed the USRDS database to evaluate prevalence and survival of children with HIVAN in the U.S. Only 60 (0.78%) of the reported 7732 patients with HIVAN were <21 years of age. Of these children, 88.3% were black, and 50% were male. Survival rate for children in this database was better than that for adults with HIVAN at 12, 24, and 36 months (76%, 62%, and 54% for children, compared with 60%, 43%, and 34% for adults). The major factor associated with survival was female sex. The authors concluded that only a small number of children with HIVAN and ESRD have received dialysis in the United States and that prognosis for children with HIVAN is better than for adults with HIVAN.

**Clinical presentation.** In children, as in adults, proteinuria may be the earliest clinical presentation of HIVAN and may rarely be the first manifestation of HIV infection in a patient with unsuspected disease [208]. The degree of proteinuria may vary from minimal to nephrotic-range proteinuria [204], with associated clinical findings of edema and the full nephrotic syndrome. Ingulli et al. [201] reported that 15 children from their cohort of 164 pediatric AIDS clinic patients developed nephrotic syndrome. Five of these patients experienced ESRD by 8 months after diagnosis [201]. One series that described 6 pediatric patients with HIVAN reported that 15 patients presented with nephrotic-range proteinuria, and 1 presented with mild proteinuria. Two of these patients had hematuria in addition to proteinuria, and 1 patient received a diagnosis of renal tubular acidosis [206]. Renal disease in children who are HIV positive may be “classic” HIVAN, but it may also include fluid and electrolyte abnormalities, urinary tract infections, renal tubular acidosis, ARF, treatment-related nephrotoxicity, infiltrative diseases of the kidney, hemolytic uremic syndrome, or IgA nephropathy [204, 209]. In a situation similar to that for adults, persistent sterile leukocyturia has been reported in children receiving indinavir, accompanied by reversible impairment in renal function [210].

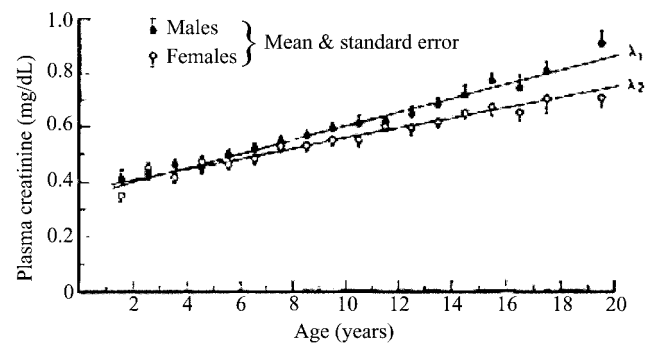
The findings of ultrasound evaluation of the kidneys may be normal; however, echogenic kidneys that are large for the patient’s age and height may be seen at early and late stages of HIVAN [204]. Nuclear renal scans utilizing mercaptoacetyl-

triglycine scintigraphy have been described as showing diffuse parenchymal dysfunction [211]; however, this abnormality is nonspecific and not pathognomonic for HIVAN.

**Screening and evaluation.** A brief review of normal renal function in the pediatric population may assist the clinician in recognizing abnormal findings in children, for whom normal laboratory values vary by age. Although it is at times inaccurate, estimation of GFR in clinical practice can be easily performed with use of a formula derived by Schwartz et al. [212, 213]. Schwartz and coworkers devised a useful graph (figure 2) for mean normal creatinine values by age, based on applying this formula to a large population of healthy children [213]. An online calculator is also available at the Web site of the National Kidney Disease Education Program [214].

Compared with adults, more-frequent screening is required for children because of the laboratory changes associated with growth and development. If proteinuria is detected, a urinary protein-to-creatinine ratio measurement is indicated (normal ratio,  $\leq 0.2$  g/g) [215, 216]. Additional investigations may include a complete metabolic panel, including determination of total protein and albumin levels; serological testing for hepatitis B, C3, and C4; antinuclear antibody testing; or urine cultures for bacteria or viral pathogens. Timed urine collections for protein excretion and creatinine clearance measurements may be indicated in children who are toilet trained. Renal sonogram may be helpful if hematuria, infection, or renal insufficiency is present.

Referral to a pediatric nephrologist is warranted for persistent significant proteinuria (grade  $\geq 1+$  by urine dipstick analysis or protein-to-creatinine ratio  $\geq 0.2$  for 3 specimens), persistent microscopic hematuria, gross hematuria in the absence of urinary tract infection, edema, hypertension, recurrent urinary tract infections, electrolyte abnormalities, persistent metabolic acidosis, or elevated blood urea nitrogen or creatinine levels. Persistent proteinuria or renal insufficiency may be indications for percutaneous renal biopsy to determine the histopathological diagnosis and guide prognosis therapy.



**Figure 2.** Mean ( $\pm$  SE) creatinine levels in plasma for healthy children and adolescents. Reprinted with permission from [213].  $\lambda_1$ , male subjects;  $\lambda_2$ , female subjects.

**Treatment.** Although aggressive antiretroviral therapy has been demonstrated to improve renal function in some patients, data concerning adjustment of HAART dosing in children with renal disease is unavailable. Drugs that require elimination by the kidney should have dose adjustments made to avoid toxicities in all patients with renal insufficiency, using data for adults as a guide. The combined expertise of the infectious disease specialist and pediatric nephrologist should be employed for developing a treatment strategy for HIV-infected children with ESRD.

Because data concerning treatment of HIVAN in children are lacking, therapeutic strategies should mirror those used for adult patients. As in adults, experimental evidence had suggested a direct role for HIV infection in renal pathogenesis of childhood HIVAN [217, 218]. Therefore, treatment goals include reduction of HIV replication to slow progression of renal disease, although studies evaluating the use of HAART or angiotensin-converting enzyme inhibitors in children with HIV-related renal diseases have not been reported. In the 15 children with nephrotic syndrome described above, 13 were treated with steroid therapy, with no response. Three patients achieved remission of proteinuria with cyclosporine treatment [201]. Although clinical trials involving children have not been carried out to date, current practice may include treatment of significant proteinuria with oral ACE inhibitors, such as enalapril administered at 0.08 mg/kg of body weight per day up to 2.5 mg as a starting dose, then titrated to effect. A decrease in proteinuria of 50% is considered a sign of therapeutic effect. Data concerning outcomes of renal transplantation in HIV-infected children are lacking, although this may prove to be a viable option [204, 219].

## SPECIAL TOPICS

**Recommendation 1.** Use of recombinant human erythropoietin should be considered in patients with hemoglobin levels 2 g/dL less than the lower limit of normal; the therapeutic hemoglobin target is a hemoglobin level of 11–12 g/dL (C-III).

**Recommendation 2.** Analogous to the general population with CKD, all HIV-infected ESRD patients with secondary hyperparathyroidism (serum calcium level, <9.5 mg/dL; serum phosphorus level, <4.6 mg/dL; and serum parathyroid hormone level, >35 pg/mL) should be treated with 1,25-dihydroxy vitamin D3 or its analogues (C-III).

**Recommendation 3.** HIV-infected patients requiring hemodialysis should have anti-HBs titers checked after receiving a standard primary series of 3 hepatitis B vaccinations and should receive a fourth injection if these titers are <10 IU/L (B-II).

**Anemia and CKD.** The problem of anemia in patients with CKD due to insufficient production of erythropoietin is further compounded if patients are infected with HIV. Anemia is the most common hematological abnormality in HIV-infected patients [220]. Shrivastava et al. [221] found that the mean baseline

hematocrit of HIV-infected patients with ESRD was 22%, compared with 26% in diabetic and nondiabetic patients with ESRD who did not have HIV infection. Similarly, Abbott et al. [222], using data from the Dialysis Morbidity and Mortality Wave 2 study, found that mean hematocrits ( $\pm$  SD) in patients with HIVAN ( $26.2\% \pm 6.5\%$ ) were significantly lower than those in all other patients with ESRD starting dialysis ( $30.5\% \pm 6.1\%$ ;  $P < .05$ ). In both CKD and HIV infection, the presence of anemia is independently associated with shorter survival [220, 223].

In an effort to improve outcomes in patients with CKD and ESRD, the K/DOQI has published practice guidelines for taking care of patients with anemia and CKD [224]. The applicability and the efficacy of these guidelines in managing anemia in patients with HIV infection and CKD have not been addressed. K/DOQI recommends that testing for anemia should be initiated for patients with CKD when the hemoglobin level is <11 g/dL (hematocrit, <33%) in premenopausal females and prepubertal patients and when the hemoglobin level is <12 g/dL (hematocrit, <37%) in adult men.

Recombinant human erythropoietin therapy is an appropriate treatment option for patients with symptomatic mild anemia or moderate anemia (hemoglobin level,  $\geq 2$  g/dL below the lower limit of normal). The target range for hemoglobin level recommended for patients with CKD is 11–12 g/dL. Shrivastava et al. [221] found that the response to recombinant erythropoietin in HIV-infected patients with ESRD, despite the presence of coexisting opportunistic infections and the use of the antiretroviral agent zidovudine, was similar to that in HIV-negative patients. After 8 weeks of erythropoietin administered at 100 U/kg 3 times per week, the mean increase in hematocrit was 5.8%, compared with 6.7% in HIV-negative patients.

Iron is also essential for hemoglobin formation. K/DOQI recommends that iron status be monitored by the transferrin saturation and serum ferritin levels; sufficient iron should be administered to maintain a transferrin saturation level  $\geq 20\%$  and a serum ferritin level of  $\geq 100$  ng/mL [224]. Measurements of iron indices are complicated in HIV-infected patients, especially because levels of ferritin, which is an acute-phase protein, are often elevated in patients with HIV infection. To achieve K/DOQI goals, administration of intravenous iron is required in the majority of patients receiving dialysis, although the safety of this form of therapy in terms of immune activation is unknown.

**Renal osteodystrophy.** CKD and ESRD are associated with osteodystrophy. In HIV-infected patients, several reports of osteopenia and osteoporosis have been described in the literature [225]. Although the underlying mechanisms triggering bone loss in HIV-infected patients are not completely defined, traditional risk factors, HIV infection itself, HIV-associated fat redistribution, antiretroviral therapy for HIV infection, and increased production of proinflammatory cytokines (such as TNF

**Table 5. Vaccinations recommended for HIV-infected adults with chronic kidney disease.**

Pathogen	Recommendation(s)
<i>Streptococcus pneumoniae</i>	Pneumovax <sup>a</sup> or Pnu-Imune <sup>b</sup> 23 administered in a single 0.5-mL subcutaneous or intramuscular dose if CD4 <sup>+</sup> cell count $\geq$ 200 cells/mm <sup>3</sup> . Additional vaccination is recommended for patients initially vaccinated at a CD4 <sup>+</sup> count <200 cells/mm <sup>3</sup> whose CD4 <sup>+</sup> count increases to $\geq$ 200 cells/mm <sup>3</sup> . It is preferable to vaccinate such individuals before development of end-stage renal disease. Patients should be revaccinated after 5 years.
Influenza virus	All patients should be vaccinated annually.
Hepatitis A virus	Patients who are negative for anti-hepatitis A virus and patients at increased risk for hepatitis A virus infection (e.g., illicit drug users, men who have sex with men, and patients with chronic liver disease [including chronic hepatitis B or hepatitis C]) should be vaccinated.
Hepatitis B virus	
Patients of all ages	For monitoring, check antibody to hepatitis B surface antigen (anti-HBs) titers 1–2 months after the last primary vaccine dose is administered (an adequate response is $\geq$ 10 mIU/mL). Revaccinate those patients who do not respond with 3 doses. For those patients who do respond, follow anti-HBs levels semiannually; if anti-HBs levels are <10 mIU/mL, administer a booster dose.
Patients aged $\geq$ 20 years	
Predialysis	Administer Recombivax HB <sup>a</sup> at a dose of 10 $\mu$ g at 0, 1, and 6 months or Engerix-B <sup>c</sup> at a dose of 20 $\mu$ g im at 0, 1, and 6 months.
Dialysis dependent	Administer Recombivax HB <sup>a</sup> at a dose of 40 $\mu$ g at 0, 1, and 6 months or Engerix-B <sup>c</sup> at a dose of 40 $\mu$ g im at 0, 1, 2, and 6 months.
Patients aged <20 years	Administer Recombivax HB <sup>a</sup> at a dose of 5 $\mu$ g at 0, 1, and 6 months or Engerix-B <sup>c</sup> at a dose of 10 $\mu$ g im at 0, 1, and 6 months.

**NOTE.** Adapted from [238].

<sup>a</sup> Merck.

<sup>b</sup> Lederle.

<sup>c</sup> SmithKline Beecham Biologicals.

and IL-6) may have roles in osteoclast activation and resorption [225–230]. HIV-infected patients have been reported to have low baseline and maximal secretion of parathyroid hormone and 1,25-dihydroxyvitamin D3 levels [228, 231, 232]. Parathyroid cells have been found to express protein recognized by antibodies directed against CD4<sup>+</sup> cells, suggesting that parathyroid cells may be infected with HIV and with subsequent impairment of parathyroid hormone release. Low 1,25-dihydroxyvitamin D3 levels are associated with low CD4<sup>+</sup> lymphocyte counts, advanced HIV infection, and higher TNF- $\alpha$  levels. Abbott et al. [222] found that the mean parathyroid hormone level ( $\pm$  SD) was lower in patients with HIVAN and ESRD (239  $\pm$  225 pcg/L) than in patients with other causes of ESRD (308  $\pm$  319 pcg/L), although the difference was not statistically significant. Although data on bone disease in patients with CKD and HIV infection is not available, it is known that HIV-infected patients with CKD develop complications of altered calcium and phosphate metabolism similar to HIV-negative patients [233]. K/DOQI has also published clinical practice guidelines for bone metabolism and disease in CKD [234], although these strategies need confirmation in the HIV-infected population.

**Vaccinations.** The immunosuppression resulting from both HIV infection and CKD is likely to lead to suboptimal responses to vaccinations. The development of protective antibodies and

the duration of this protection is likely to be short because of decreases in the levels of these antibodies [235]. Hepatitis B virus remains a significant risk to patients receiving chronic hemodialysis. Several reports have suggested that antibody response to vaccination for hepatitis B is impaired in HIV-infected patients [236, 237]. A recent review of hepatitis vaccination data for 348 HIV-infected patients who received dialysis in Gambro dialysis units in the United States from 1994–2003 revealed that only 54.3% of those who received the 3-dose series of 40- $\mu$ g subcutaneous hepatitis B vaccine (Recombivax HB; Merck) developed protective anti-HBs titers >10 IU/L (T. Ahuja, unpublished data). Therefore, anti-HBs titers should be checked following vaccination for hepatitis B, and a booster dose should be offered if antibody levels are <10 IU/L. Table 5 lists the vaccinations that HIV-infected patients with CKD should be offered (adapted from [238]).

## FUTURE DIRECTIONS

There is a great need for well-designed, prospective studies evaluating the natural history of kidney diseases in HIV-infected patients in both the adult and the pediatric populations. Studies of consecutively evaluated patients with evidence of renal disease that compare histological and clinical diagnoses would be

invaluable. Screening strategies for incipient renal disease need to be tested rigorously. The modulating effects of hepatitis B and/or hepatitis C on renal disease and outcomes in HIV-infected patients also require investigation. Prospective, randomized controlled trials for the treatment of HIVAN and other HIV-related proteinuric renal diseases (e.g., hepatitis B- and hepatitis C-induced glomerulonephritides) are clearly required. More pharmacokinetic evaluations of the proper dosing of antiretroviral agents in both children and adults should also be performed. Some of these questions are currently being addressed by the PACTG and the Adult AIDS Clinical Trials Group, and they will hopefully lay the foundation for further research in this emerging field.

## Acknowledgments

We thank Dr. Robert C. Kalayjian, for his critical review of this manuscript, and Annette C. Mucha, Kathy Cortez, and Mark Leisure of the Infectious Diseases Society of America, for organizational and logistical support.

**Financial support.** Adult AIDS Clinical Trials Group (AACTG) (AI-38858) and the Pediatric AIDS Clinical Trials Group (AI-41089), both funded by the National Institute of Allergy and Infectious Diseases; National Institutes of Health (K23 HL073682 and U01 AI025859 to S.K.G.; K23 DK02922 to J.A.E.; DK61281 and DK56492 to J.A.W.; U01 AI46381 to K.T.T.; U01 AI32775, P01 AI 49364, and P30 DA 12121 to J.L.L.; U01 AI052748 to M.R.; and K23 DK02724 to L.A.S.); the National Institute of Child Health and Human Development (NO1 HD33345 to S.A.N.); the National Institute of Digestive and Kidney Diseases (P01DK56492 to P.E.K.); and the Universitywide AIDS Research Program (TP00-SF-154 to M.R.). This work was created in part by members of the Renal Subcommittee for the Complications Research Agenda Committee of the AACTG.

**Potential conflicts of interest.** S.K.G. has received honoraria from Gilead Sciences. T.S.A. has received speaker bureau fees and funding from Genzyme. K.T.T. has received grant support and honoraria from GlaxoSmithKline, Bristol-Myers Squibb, Gilead Sciences, and Merck. M.R. has received grant support from GlaxoSmithKline, Bristol-Myers Squibb, and Agouron Pharmaceuticals and has received honoraria from Gilead Sciences and Boehringer Ingelheim. F.J.P. has received honoraria from Bristol Myers Squibb, Roche Pharmaceuticals, Gilead Sciences, and Agouron Pharmaceuticals. J.L.L. has received grant support and honoraria from Gilead Sciences, Tibotec Pharmaceuticals, Abbott Laboratories, Merck, and Bristol-Myers Squibb. All other authors: no conflicts.

## References

- Szczec LA, Gange SJ, van der Horst C, et al. Predictors of proteinuria and renal failure among women with HIV infection. *Kidney Int* **2002**; 61:195–202.
- Gupta SK, Mamlin BW, Johnson CS, Dollins MD, Topf JM, Dube MP. Prevalence of proteinuria and the development of chronic kidney disease in HIV-infected patients. *Clin Nephrol* **2004**; 61:1–6.
- Gardner LI, Holmberg SD, Williamson JM, et al. Development of proteinuria or elevated serum creatinine and mortality in HIV-infected women. *J Acquir Immune Defic Syndr* **2003**; 32:203–9.
- Szczec LA, Hoover DR, Feldman JG, et al. Association between renal disease and outcomes among HIV-infected women receiving or not receiving antiretroviral therapy. *Clin Infect Dis* **2004**; 39:1199–206.
- K/DOQI clinical practice guidelines for chronic kidney disease: evaluation, classification, and stratification. *Am J Kidney Dis* **2002**; 39: S1–266.
- Cockcroft DW, Gault MH. Prediction of creatinine clearance from serum creatinine. *Nephron* **1976**; 16:31–41.
- Levey AS, Bosch JP, Lewis JB, Greene T, Rogers N, Roth D. A more accurate method to estimate glomerular filtration rate from serum creatinine: a new prediction equation. Modification of Diet in Renal Disease Study Group. *Ann Intern Med* **1999**; 130:461–70.
- Levey AS, Green T, Kusek JW, Beck GJ. A simplified equation to predict glomerular filtration rate from serum creatinine. *J Am Soc Nephrol* **2000**; 11:155A.
- Clinical practice guidelines of the Kidney Disease Outcomes Quality Initiative of the National Kidney Foundation. Available at: <http://www.kidney.org/professionals/kdoqi/guidelines.cfm>. Accessed 5 April 2005.
- Ginsberg JM, Chang BS, Matarese RA, Garella S. Use of single voided urine samples to estimate quantitative proteinuria. *N Engl J Med* **1983**; 309:1543–6.
- Mogensen CE. Microalbuminuria predicts clinical proteinuria and early mortality in maturity-onset diabetes. *N Engl J Med* **1984**; 310: 356–60.
- Parving HH, Lehnert H, Brochner-Mortensen J, et al. The effect of irbesartan on the development of diabetic nephropathy in patients with type 2 diabetes. *N Engl J Med* **2001**; 345:870–8.
- Gerstein HC, Mann JF, Yi Q, et al. Albuminuria and risk of cardiovascular events, death, and heart failure in diabetic and nondiabetic individuals. *JAMA* **2001**; 286:421–6.
- Marras D, Bruggeman LA, Gao F, et al. Replication and compartmentalization of HIV-1 in kidney epithelium of patients with HIV-associated nephropathy. *Nat Med* **2002**; 8:522–6.
- Winston JA, Bruggeman LA, Ross MD, et al. Nephropathy and establishment of a renal reservoir of HIV type 1 during primary infection. *N Engl J Med* **2001**; 344:1979–84.
- Bruggeman LA, Ross MD, Tanji N, et al. Renal epithelium is a previously unrecognized site of HIV-1 infection. *J Am Soc Nephrol* **2000**; 11:2079–87.
- Ross MJ, Bruggeman LA, Wilson PD, Klotman PE. Microcyst formation and HIV-1 gene expression occur in multiple nephron segments in HIV-associated nephropathy. *J Am Soc Nephrol* **2001**; 12: 2645–51.
- Cheng JT, Anderson HL Jr, Markowitz GS, Appel GB, Pogue VA, D'Agati VD. Hepatitis C virus-associated glomerular disease in patients with human immunodeficiency virus coinfection. *J Am Soc Nephrol* **1999**; 10:1566–74.
- Szczec LA, Gupta SK, Habash R, et al. The clinical epidemiology and course of the spectrum of renal diseases associated with HIV infection. *Kidney Int* **2004**; 66:1145–52.
- Szczec LA, Kalayjian R, Rodriguez R, Gupta S, Coladonato J, Winston J. The clinical characteristics and antiretroviral dosing patterns of HIV-infected patients receiving dialysis. The Adult AIDS Clinical Trial Group Renal Complications Committee. *Kidney Int* **2003**; 63: 2295–301.
- Kimmel PL, Phillips TM, Ferreira-Centeno A, Farkas-Szallasi T, Abraham AA, Garrett CT. Brief report: idiopathic IgA nephropathy in patients with human immunodeficiency virus infection. *N Engl J Med* **1992**; 327:702–6.
- Tokars JL, Frank M, Alter MJ, Arduino MJ. National surveillance of dialysis-associated diseases in the United States, 2000. *Semin Dial* **2002**; 15:162–71.
- Abbott KC, Hypolite I, Welch PG, Agodoa LY. Human immunodeficiency virus/acquired immunodeficiency syndrome-associated nephropathy at end-stage renal disease in the United States: patient characteristics and survival in the pre highly active antiretroviral therapy era. *J Nephrol* **2001**; 14:377–83.
- Ahuja TS, Grady J, Khan S. Changing trends in the survival of dialysis patients with human immunodeficiency virus in the United States. *J Am Soc Nephrol* **2002**; 13:1889–93.
- Eggers PW, Kimmel PL. Is there an epidemic of HIV-associated nephropathy in the ESRD program? *J Am Soc Nephrol* **2004**; 15:2477–85.

26. United States Renal Data System 2003 annual data report: atlas of end-stage renal disease in the United States. Bethesda, MD: National Institutes of Health, National Institutes of Diabetes and Digestive and Kidney Diseases, **2003**.
27. Ahuja TS, Borucki M, Funtanilla M, Shahinian V, Hollander M, Rajaraman S. Is the prevalence of HIV-associated nephropathy decreasing? *Am J Nephrol* **1999**; 19:655–9.
28. Rao TK, Filippone EJ, Nicastri AD, et al. Associated focal and segmental glomerulosclerosis in the acquired immunodeficiency syndrome. *N Engl J Med* **1984**; 310:669–73.
29. Rao TK, Friedman EA, Nicastri AD. The types of renal disease in the acquired immunodeficiency syndrome. *N Engl J Med* **1987**; 316:1062–8.
30. Carbone L, D'Agati V, Cheng JT, Appel GB. Course and prognosis of human immunodeficiency virus-associated nephropathy. *Am J Med* **1989**; 87:389–95.
31. Mazbar SA, Schoenfeld PY, Humphreys MH. Renal involvement in patients infected with HIV: experience at San Francisco General Hospital. *Kidney Int* **1990**; 37:1325–32.
32. Bourgoignie JJ, Meneses R, Ortiz C, Jaffe D, Pardo V. The clinical spectrum of renal disease associated with human immunodeficiency virus. *Am J Kidney Dis* **1988**; 12:131–7.
33. Cantor ES, Kimmel PL, Bosch JP. Effect of race on expression of acquired immunodeficiency syndrome-associated nephropathy. *Arch Intern Med* **1991**; 151:125–8.
34. Frassetto L, Schoenfeld PY, Humphreys MH. Increasing incidence of human immunodeficiency virus-associated nephropathy at San Francisco General Hospital. *Am J Kidney Dis* **1991**; 18:655–9.
35. Shahinian V, Rajaraman S, Borucki M, Grady J, Hollander WM, Ahuja TS. Prevalence of HIV-associated nephropathy in autopsies of HIV-infected patients. *Am J Kidney Dis* **2000**; 35:884–8.
36. Winston JA, Klotman ME, Klotman PE. HIV-associated nephropathy is a late, not early, manifestation of HIV-1 infection. *Kidney Int* **1999**; 55:1036–40.
37. Freedman BI, Soucie JM, Stone SM, Pegram S. Familial clustering of end-stage renal disease in blacks with HIV-associated nephropathy. *Am J Kidney Dis* **1999**; 34:254–8.
38. Valeri A, Neusy AJ. Acute and chronic renal disease in hospitalized AIDS patients. *Clin Nephrol* **1991**; 35:110–8.
39. Pardo V, Meneses R, Ossa L, et al. AIDS-related glomerulopathy: occurrence in specific risk groups. *Kidney Int* **1987**; 31:1167–73.
40. Monahan M, Tanji N, Klotman PE. HIV-associated nephropathy: an urban epidemic. *Semin Nephrol* **2001**; 21:394–402.
41. Eggers PW, Kimmel PL. Is there an epidemic of HIV Infection in the US ESRD program? *J Am Soc Nephrol* **2004**; 15:2477–85.
42. Laradi A, Mallet A, Beaufile H, Allouache M, Martinez F. HIV-associated nephropathy: outcome and prognosis factors. *Groupe d'Etudes Nephrologiques d'Ile de France. J Am Soc Nephrol* **1998**; 9:2327–35.
43. Poinet JL, Desassis JE, Chanton N, et al. Prevalence of HIV infection in dialysis patients: results of a national multicenter study. *Nephrologie* **1999**; 20:159–63.
44. Ortiz C, Meneses R, Jaffe D, Fernandez JA, Perez G, Bourgoignie JJ. Outcome of patients with human immunodeficiency virus on maintenance hemodialysis. *Kidney Int* **1988**; 34:248–53.
45. Ahuja TS, Borucki M, Grady J. Highly active antiretroviral therapy improves survival of HIV-infected hemodialysis patients. *Am J Kidney Dis* **2000**; 36:574–80.
46. Dave MB, Shabih K, Blum S. Maintenance hemodialysis in patients with HIV-associated nephropathy. *Clin Nephrol* **1998**; 50:367–74.
47. Ifudu O, Mayers JD, Matthew JJ, et al. Uremia therapy in patients with end-stage renal disease and human immunodeficiency virus infection: has the outcome changed in the 1990s? *Am J Kidney Dis* **1997**; 29:549–52.
48. Perinbasekar S, Brod-Miller C, Pal S, Mattana J. Predictors of survival in HIV-infected patients on hemodialysis. *Am J Nephrol* **1996**; 16:280–6.
49. Tebben JA, Rigsby MO, Selwyn PA, Brennan N, Kligler A, Finkelstein FO. Outcome of HIV infected patients on continuous ambulatory peritoneal dialysis. *Kidney Int* **1993**; 44:191–8.
50. Rodriguez RA, Mendelson M, O'Hare AM, Hsu LC, Schoenfeld P. Determinants of survival among HIV-infected chronic dialysis patients. *J Am Soc Nephrol* **2003**; 14:1307–13.
51. Cosgrove CJ, Abu-Alfa AK, Perazella MA. Observations on HIV-associated renal disease in the era of highly active antiretroviral therapy. *Am J Med Sci* **2002**; 323:102–6.
52. Szczech LA, Edwards LJ, Sanders LL, et al. Protease inhibitors are associated with a slowed progression of HIV-related renal diseases. *Clin Nephrol* **2002**; 57:336–41.
53. Lucas GM, Eustace JA, Sozio S, Mentari EK, Appiah KA, Moore RD. Highly active antiretroviral therapy and the incidence of HIV-1-associated nephropathy: a 12-year cohort study. *AIDS* **2004**; 18:541–6.
54. Gardner LI, Klein RS, Szczech LA, et al. Rates and risk factors for condition-specific hospitalizations in HIV-infected and uninfected women. *J Acquir Immune Defic Syndr* **2003**; 34:320–30.
55. Reisler RB, Han C, Burman WJ, Tedaldi EM, Neaton JD. Grade 4 events are as important as AIDS events in the era of HAART. *J Acquir Immune Defic Syndr* **2003**; 34:379–86.
56. Palella F, Baker R, Moorman A, Chmiel J, Wood K, Holmberg S. Mortality and morbidity in the HAART era [abstract 872]. In: Program and abstracts of the 11th Conference on Retroviruses and Opportunistic Infections (San Francisco, CA). Alexandria, VA: Foundation for Retroviruses and Human Health, **2004**. Available at: <http://www.retroconference.org/2004/home.htm> (accessed 19 April 2005).
57. Wali RK, Drachenberg CI, Papadimitriou JC, Keay S, Ramos E. HIV-1-associated nephropathy and response to highly-active antiretroviral therapy. *Lancet* **1998**; 352:783–84.
58. Eustace JA, Nuermberger E, Choi M, Scheel PJ Jr, Moore R, Briggs WA. Cohort study of the treatment of severe HIV-associated nephropathy with corticosteroids. *Kidney Int* **2000**; 58:1253–60.
59. Kimmel PL, Mishkin GJ, Umana WO. Captopril and renal survival in patients with human immunodeficiency virus nephropathy. *Am J Kidney Dis* **1996**; 28:202–8.
60. Burns GC, Matute R, Onyema D, Davis I, Toth I. Response to inhibition of angiotensin-converting enzyme in human immunodeficiency virus-associated nephropathy: a case report. *Am J Kidney Dis* **1994**; 23:441–3.
61. Wei A, Burns GC, Williams BA, Mohammed NB, Visintainer P, Sivak SL. Long-term renal survival in HIV-associated nephropathy with angiotensin-converting enzyme inhibition. *Kidney Int* **2003**; 64:1462–71.
62. Agarwal R, Panesar A, Lewis RR. Dipstick proteinuria: can it guide hypertension management? *Am J Kidney Dis* **2002**; 39:1190–5.
63. Di Fiori JL, Rodrigue D, Kaptein EM, Ralls PW. Diagnostic sonography of HIV-associated nephropathy: new observations and clinical correlation. *AJR Am J Roentgenol* **1998**; 171:713–6.
64. Richards NT, Darby S, Howie AJ, Adu D, Michael J. Knowledge of renal histology alters patient management in over 40% of cases. *Nephrol Dial Transplant* **1994**; 9:1255–9.
65. Gazzaruso C, Bruno R, Garzaniti A, et al. Hypertension among HIV patients: prevalence and relationships to insulin resistance and metabolic syndrome. *J Hypertens* **2003**; 21:1377–82.
66. Bergersen BM, Sandvik L, Dunlop O, Birkeland K, Bruun JN. Prevalence of hypertension in HIV-positive patients on highly active retroviral therapy (HAART) compared with HAART-naive and HIV-negative controls: results from a Norwegian study of 721 patients. *Eur J Clin Microbiol Infect Dis* **2003**; 22:731–6.
67. Glesby M, Aberg J, Kendall M, et al. Pharmacokinetic (PK) interactions between HIV protease inhibitors (PIs) and calcium channel blockers (CCBs) [abstract 915]. In: Program and abstracts of the 2004 annual meeting of the Infectious Diseases Society of America (Boston, MA). Alexandria, VA: Infectious Diseases Society of America, **2004**. Available at: <http://www.idsociety.org> (accessed 19 April 2005).
68. Feinfeld DA, Kaplan R, Dressler R, Lynn RI. Survival of human immunodeficiency virus-infected patients on maintenance dialysis. *Clin Nephrol* **1989**; 32:221–4.

69. Kimmel PL, Umana WO, Simmens SJ, Watson J, Bosch JP. Continuous ambulatory peritoneal dialysis and survival of HIV infected patients with end-stage renal disease. *Kidney Int* **1993**;44:373–8.
70. Recommendations for providing dialysis treatment to patients infected with human T-lymphotropic virus type III/lymphadenopathy-associated virus. Centers for Disease Control, Department of Health and Human Services. *Ann Intern Med* **1986**;105:558–9.
71. Ahuja TS, Collinge N, Grady J, Khan S. Is dialysis modality a factor in survival of patients with ESRD and HIV-associated nephropathy? *Am J Kidney Dis* **2003**;41:1060–4.
72. Gorski TF, Gorski YC, Muney J. Complications of hemodialysis access in HIV-positive patients. *Am Surg* **2002**;68:1104–6.
73. Curi MA, Pappas PJ, Silva MB Jr, et al. Hemodialysis access: influence of the human immunodeficiency virus on patency and infection rates. *J Vasc Surg* **1999**;29:608–16.
74. Obialo CI, Robinson T, Brathwaite M. Hemodialysis vascular access: variable thrombus-free survival in three subpopulations of black patients. *Am J Kidney Dis* **1998**;31:250–6.
75. Mokrzycki MH, Schroppel B, von Gersdorff G, Rush H, Zdunek MP, Feingold R. Tunneled-cuffed catheter associated infections in hemodialysis patients who are seropositive for the human immunodeficiency virus. *J Am Soc Nephrol* **2000**;11:2122–7.
76. Farzadegan H, Ford D, Malan M, Masters B, Scheel PJ. HIV-1 survival kinetics in peritoneal dialysis effluent. *Kidney Int* **1996**;50:1659–62.
77. Breyer JA, Harbison MA. Isolation and quantitation of human immunodeficiency virus type 1 (HIV-1) from peritoneal dialysate: implications for infection control. *Perit Dial Int* **1995**;15:179–80.
78. Erice A, Rhame FS, Heussner RC, Dunn DL, Balfour HH Jr. Human immunodeficiency virus infection in patients with solid-organ transplants: report of five cases and review. *Rev Infect Dis* **1991**;13:537–47.
79. Ahuja TS, Zingman B, Glicklich D. Long-term survival in an HIV-infected renal transplant recipient. *Am J Nephrol* **1997**;17:480–2.
80. Rizzardi GP, Lazzarin A, Pantaleo G. Potential role of immune modulation in the effective long-term control of HIV-1 infection. *J Biol Regul Homeost Agents* **2002**;16:83–90.
81. Andrieu JM, Even P, Venet A, et al. Effects of cyclosporin on T-cell subsets in human immunodeficiency virus disease. *Clin Immunol Immunopathol* **1988**;47:181–98.
82. Rizzardi GP, Harari A, Capiluppi B, et al. Treatment of primary HIV-1 infection with cyclosporin A coupled with highly active antiretroviral therapy. *J Clin Invest* **2002**;109:681–8.
83. Groux H, Torpier G, Monte D, Mouton Y, Capron A, Ameisen JC. Activation-induced death by apoptosis in CD4<sup>+</sup> T cells from human immunodeficiency virus-infected asymptomatic individuals. *J Exp Med* **1992**;175:331–40.
84. Sheppard HW, Ascher MS. The natural history and pathogenesis of HIV infection. *Annu Rev Microbiol* **1992**;46:533–64.
85. Hossain MM, Coull JJ, Drusano GL, Margolis DM. Dose proportional inhibition of HIV-1 replication by mycophenolic acid and synergistic inhibition in combination with abacavir, didanosine, and tenofovir. *Antiviral Res* **2002**;55:41–52.
86. Margolis DM, Kewn S, Coull JJ, et al. The addition of mycophenolate mofetil to antiretroviral therapy including abacavir is associated with depletion of intracellular deoxyguanosine triphosphate and a decrease in plasma HIV-1 RNA. *J Acquir Immune Defic Syndr* **2002**;31:45–9.
87. Ragni MV, Belle SH, Im K, et al. Survival of human immunodeficiency virus-infected liver transplant recipients. *J Infect Dis* **2003**;188:1412–20.
88. Roland ME, Stock PG. Review of solid-organ transplantation in HIV-infected patients. *Transplantation* **2003**;75:425–9.
89. Abbott KC, Swanson SJ, Agodoa LY, Kimmel PL. Human immunodeficiency virus infection and kidney transplantation in the era of highly active antiretroviral therapy and modern immunosuppression. *J Am Soc Nephrol* **2004**;15:1633–9.
90. Stock PG, Roland ME, Carlson L, et al. Kidney and liver transplantation in human immunodeficiency virus-infected patients: a pilot safety and efficacy study. *Transplantation* **2003**;76:370–5.
91. Michel C, Dosquet P, Ronco P, Mougnot B, Viron B, Mignon F. Nephropathy associated with infection by human immunodeficiency virus: a report on 11 cases including 6 treated with zidovudine. *Nephron* **1992**;62:434–40.
92. Harrer T, Hunzelmann N, Stoll R, Baur A, Kalden JR. Therapy for HIV-1-related nephritis with zidovudine. *AIDS* **1990**;4:815–7.
93. Chemlal K, Nochy D, Kenouch S, Joly V, Carbon C. Dramatic improvement of renal dysfunction in a human immunodeficiency virus-infected woman treated with highly active antiretroviral therapy. *Clin Infect Dis* **2000**;31:805–6.
94. Lee W, Klotman PE, Klotman ME, Winston J. The natural history of HIV associated nephropathy [abstract 176]. In: Program and abstracts of the 36th Annual Meeting of the American Society of Nephrology (San Diego, CA). Washington, DC: American Society of Nephrology, **2003**.
95. Betjes MG, Verhagen DW. Stable improvement of renal function after initiation of highly active anti-retroviral therapy in patients with HIV-1-associated nephropathy. *Nephrol Dial Transplant* **2002**;17:1836–9.
96. Kirchner JT. Resolution of renal failure after initiation of HAART: 3 cases and a discussion of the literature. *AIDS Reader* **2002**;12:103–5, 10–2.
97. Ross MJ, Klotman PE, Winston JA. HIV-associated nephropathy: case study and review of the literature. *AIDS Patient Care STDS* **2000**;14:637–45.
98. Bird JE, Durham SK, Giancarli MR, et al. Captopril prevents nephropathy in HIV-transgenic mice. *J Am Soc Nephrol* **1998**;9:1441–7.
99. Burns GC, Paul SK, Toth IR, Sivak SL. Effect of angiotensin-converting enzyme inhibition in HIV-associated nephropathy. *J Am Soc Nephrol* **1997**;8:1140–6.
100. K/DOQI Clinical practice guidelines on hypertension and antihypertensive agents in chronic kidney disease. *Am J Kidney Dis* **2004**;43:S1–290.
101. Briggs WA, Tanawattanacharoen S, Choi MJ, Scheel PJ Jr, Nadasdy T, Racusen L. Clinicopathologic correlates of prednisone treatment of human immunodeficiency virus-associated nephropathy. *Am J Kidney Dis* **1996**;28:618–21.
102. Smith MC, Austen JL, Carey JT, et al. Prednisone improves renal function and proteinuria in human immunodeficiency virus-associated nephropathy. *Am J Med* **1996**;101:41–8.
103. Navarette JE, Pastan SO. Effect of highly active antiretroviral treatment (H) and prednisone (P) in biopsy-proven HIV-associated (HIVAN) nephropathy [abstract 93A]. In: American Society of Nephrology program and abstracts: 33rd annual meeting and 2000 renal week of the American Society of Nephrology. Vol. 11. Toronto, Ontario: American Society of Nephrology, **2000**.
104. McComsey GA, Whalen CC, Mawhorter SD, et al. Placebo-controlled trial of prednisone in advanced HIV-1 infection. *AIDS* **2001**;15:321–7.
105. Wallis RS, Kalayjian R, Jacobson JM, et al. A study of the immunology, virology, and safety of prednisone in HIV-1-infected subjects with CD4 cell counts of 200 to 700/mm<sup>3</sup>. *J Acquir Immune Defic Syndr* **2003**;32:281–6.
106. Dellow E, Unwin R, Miller R, Williams I, Griffiths M. Protease inhibitor therapy for HIV infection: the effect on HIV-associated nephrotic syndrome. *Nephrol Dial Transplant* **1999**;14:744–7.
107. Tabechian D, Pattanaik D, Suresh U, Cohn SE, Nadasdy T. Lupus-like nephritis in an HIV-positive patient: report of a case and review of the literature. *Clin Nephrol* **2003**;60:187–94.
108. Boix E, Rivera F, Gil CM, Perez-Contreras J, Olivares J. Steroid-responsive nephrotic syndrome with minimal-change disease and IgA deposits in a HIV-infected patient. *Nephrol Dial Transplant* **2000**;15:412–4.
109. Garraffo R, Cassuto-Viguer E, Barillon J, Chanalet L, Lapalus P, Duplay H. Influence of hemodialysis on zidovudine (AZT) and its glucuronide (GAZT) pharmacokinetics: two case reports. *Int J Clin Pharmacol Ther Toxicol* **1989**;27:535–9.
110. Singlas E, Pioger JC, Taburet AM, Colin JN, Fillastre JP. Zidovudine

- disposition in patients with severe renal impairment: influence of hemodialysis. *Clin Pharmacol Ther* **1989**;46:190–7.
111. Kimmel PL, Lew SQ, Umana WO, Li PP, Gordon AM, Straw J. Pharmacokinetics of zidovudine in HIV-infected patients with end-stage renal disease. *Blood Purif* **1995**;13:340–6.
  112. Stellbrink HJ, Averdunk R, Stoehr A, Albrecht H. Zidovudine half-life in haemodialysis patients. *AIDS* **1993**;7:141–2.
  113. Paoli I, Dave M, Cohen BD. Pharmacodynamics of zidovudine in patients with end-stage renal disease. *N Engl J Med* **1992**;326:839–40.
  114. Gallicano KD, Tobe S, Sahai J, et al. Pharmacokinetics of single and chronic dose zidovudine in two HIV positive patients undergoing continuous ambulatory peritoneal dialysis (CAPD). *J Acquir Immune Defic Syndr* **1992**;5:242–50.
  115. Pachon J, Cisneros JM, Castillo JR, Garcia-Pesquera F, Canas E, Viciana P. Pharmacokinetics of zidovudine in end-stage renal disease: influence of haemodialysis. *AIDS* **1992**;6:827–30.
  116. Kremer D, Munar MY, Kohlhepp SJ, et al. Zidovudine pharmacokinetics in five HIV seronegative patients undergoing continuous ambulatory peritoneal dialysis. *Pharmacotherapy* **1992**;12:56–60.
  117. Johnson MA, Moore KH, Yuen GJ, Bye A, Pakes GE. Clinical pharmacokinetics of lamivudine. *Clin Pharmacokinet* **1999**;36:41–66.
  118. Heald AE, Hsyu PH, Yuen GJ, Robinson P, Mydlow P, Bartlett JA. Pharmacokinetics of lamivudine in human immunodeficiency virus-infected patients with renal dysfunction. *Antimicrob Agents Chemother* **1996**;40:1514–9.
  119. Bohjanen PR, Johnson MD, Szczech LA, et al. Steady-state pharmacokinetics of lamivudine in human immunodeficiency virus-infected patients with end-stage renal disease receiving chronic dialysis. *Antimicrob Agents Chemother* **2002**;46:2387–92.
  120. Izzedine H, Launay-Vacher V, Aymard G, Legrand M, Deray G. Pharmacokinetics of abacavir in HIV-1-infected patients with impaired renal function. *Nephron* **2001**;89:62–7.
  121. Grasela DM, Stoltz RR, Barry M, et al. Pharmacokinetics of single-dose oral stavudine in subjects with renal impairment and in subjects requiring hemodialysis. *Antimicrob Agents Chemother* **2000**;44:2149–53.
  122. Ziret-XR (stavudine-XR) [package insert]. Princeton, NJ: Bristol-Myers Squibb, **2003**.
  123. Knupp CA, Hak LJ, Coakley DF, et al. Disposition of didanosine in HIV-seropositive patients with normal renal function or chronic renal failure: influence of hemodialysis and continuous ambulatory peritoneal dialysis. *Clin Pharmacol Ther* **1996**;60:535–42.
  124. Singlas E, Taburet AM, Borsa Lebas F, et al. Didanosine pharmacokinetics in patients with normal and impaired renal function: influence of hemodialysis. *Antimicrob Agents Chemother* **1992**;36:1519–24.
  125. Videx-EC (didanosine-EC) [package insert]. Princeton, NJ: Bristol-Myers Squibb, **2002**.
  126. Bazunga M, Tran HT, Kertland H, Chow MS, Massarella J. The effects of renal impairment on the pharmacokinetics of zalcitabine. *J Clin Pharmacol* **1998**;38:28–33.
  127. Emtiva (emtricitabine) [package insert]. Foster City, CA: Gilead Sciences, **2003**.
  128. Izzedine H, Launay-Vacher V, Jullien V, Aymard G, Duvivier C, Deray G. Pharmacokinetics of tenofovir in haemodialysis. *Nephrol Dial Transplant* **2003**;18:1931–3.
  129. Kearney BLS, Yale K, Hayashi S, Wolf J, Coakley D, Flaherty J. Pharmacokinetics following single dose administration of tenofovir DF in subjects with renal impairment [abstract 4]. In: Program and abstracts of the 6th International Congress on Drug Therapy in HIV Infection. Glasgow, United Kingdom: **2002**. Available at: <http://www.hiv6.com>. Accessed 19 April 2005.
  130. Truvada (emtricitabine/tenofovir) [package insert]. Foster City, CA: Gilead Sciences, **2004**.
  131. Viramune (nevirapine) [package insert]. Columbus, OH: Boehringer Ingelheim/Roxane Laboratories, **2004**.
  132. Taburet AM, Gerard L, Legrand M, Aymard G, Berthelot JM. Antiretroviral drug removal by haemodialysis. *AIDS* **2000**;14:902–3.
  133. Taylor S, Little J, Halifax K, Drake S, Back D. Pharmacokinetics of nelfinavir and nevirapine in a patient with end-stage renal failure on continuous ambulatory peritoneal dialysis. *J Antimicrob Chemother* **2000**;45:716–7.
  134. Izzedine H, Launay-Vacher V, Aymard G, Legrand M, Deray G. Pharmacokinetic of nevirapine in haemodialysis. *Nephrol Dial Transplant* **2001**;16:192–3.
  135. Izzedine H, Launay-Vacher V, Deray G. Pharmacokinetics of ritonavir and nevirapine in peritoneal dialysis. *Nephrol Dial Transplant* **2001**;16:643.
  136. Sustiva (efavirenz) [package insert]. Princeton, NJ: Bristol-Myers Squibb, **2003**.
  137. Izzedine H, Aymard G, Launay-Vacher V, Hamani A, Deray G. Pharmacokinetics of efavirenz in a patient on maintenance haemodialysis. *AIDS* **2000**;14:618–9.
  138. Gill MJ, Ostrop NJ, Fiske WD, Brennan JM. Efavirenz dosing in patients receiving continuous ambulatory peritoneal dialysis. *AIDS* **2000**;14:1062–4.
  139. Rescriptor (delavirdine) [package insert]. New York: Pfizer, **2001**.
  140. Izzedine H, Aymard G, Hamani A, Launay-Vacher V, Deray G. Indinavir pharmacokinetics in haemodialysis. *Nephrol Dial Transplant* **2000**;15:1102–3.
  141. Guardiola JM, Mangues MA, Domingo P, Martinez E, Barrio JL. Indinavir pharmacokinetics in haemodialysis-dependent end-stage renal failure. *AIDS* **1998**;12:1395.
  142. Izzedine H, Launay-Vacher V, Legrand M, Aymard G, Deray G. Pharmacokinetics of ritonavir and saquinavir in a haemodialysis patient. *Nephron* **2001**;87:186–7.
  143. Fortovase (saquinavir) [package insert]. Nutley, NJ: Roche, **2003**.
  144. Invirase (saquinavir) [package insert]. Nutley, NJ: Roche, **2003**.
  145. Izzedine H, Diquet B, Launay-Vacher V, Jouan M, Theou N, Deray G. Pharmacokinetics of nelfinavir in an HIV patient with renal insufficiency. *AIDS* **1999**;13:1989.
  146. Paci-Bonaventure S, Hafi A, Vincent I, et al. Lack of removal of nelfinavir during a haemodialysis session in an HIV-1 infected patient with hepatic and renal insufficiency. *Nephrol Dial Transplant* **2001**;16:642–3.
  147. Agenerase (amprenavir) [package insert]. Research Triangle Park, NC: GlaxoSmith Kline, **2002**.
  148. Lexiva (fosamprenavir) [package insert]. Research Triangle Park, NC: GlaxoSmith Kline, **2003**.
  149. Norvir (ritonavir) [package insert]. Abbott Park, IL: Abbott Laboratories, **2001**.
  150. Kaletra (lopinavir/ritonavir) [package insert]. Abbott Park, IL: Abbott Laboratories, **2003**.
  151. Izzedine H, Launay-Vacher V, Legrand M, Lieberherr D, Caumes E, Deray G. ABT 378/r: a novel inhibitor of HIV-1 protease in haemodialysis. *AIDS* **2001**;15:662–4.
  152. Reyataz (atazanavir) [package insert]. Princeton, NJ: Bristol Meyers Squibb, **2003**.
  153. Fuzeon (enfuvirtide) [package insert]. Nutley, NJ: Roche, **2003**.
  154. Izzedine H, Launay-Vacher V, Deray G. Dosage of lamivudine in a haemodialysis patient. *Nephron* **2000**;86:553.
  155. Blanchard JN, Wohlfeiler M, Canas A, King K, Lonergan JT. Pancreatitis with didanosine and tenofovir disoproxil fumarate. *Clin Infect Dis* **2003**;37:e57–62.
  156. Steinbach WJ, Stevens DA. Review of newer antifungal and immunomodulatory strategies for invasive aspergillosis. *Clin Infect Dis* **2003**;37:S157–87.
  157. Lalezari JP, Stagg RJ, Kuppermann BD, et al. Intravenous cidofovir for peripheral cytomegalovirus retinitis in patients with AIDS: a randomized, controlled trial. *Ann Intern Med* **1997**;126:257–63.
  158. Perazella MA. Crystal-induced acute renal failure. *Am J Med* **1999**;106:459–65.
  159. Bonnet F, Bonarek M, Morlat P, et al. Risk factors for lactic acidosis in HIV-infected patients treated with nucleoside reverse-transcriptase inhibitors: a case-control study. *Clin Infect Dis* **2003**;36:1324–8.

160. Chugh S, Bird R, Alexander EA. Ritonavir and renal failure. *N Engl J Med* **1997**;336:138.
161. Duong M, Sgro C, Grappin M, Biron F, Boibieux A. Renal failure after treatment with ritonavir. *Lancet* **1996**;348:693.
162. Tashima KT, Horowitz JD, Rosen S. Indinavir nephropathy. *N Engl J Med* **1997**;336:138–9.
163. Dieleman JP, Sturkenboom MC, Jambroes M, et al. Risk factors for urological symptoms in a cohort of users of the HIV protease inhibitor indinavir sulfate: the ATHENA cohort. *Arch Intern Med* **2002**;162:1493–501.
164. Kopp JB, Miller KD, Mican JA, et al. Crystalluria and urinary tract abnormalities associated with indinavir. *Ann Intern Med* **1997**;127:119–25.
165. Dieleman JP, van Rossum AM, Stricker BC, et al. Persistent leukocyturia and loss of renal function in a prospectively monitored cohort of HIV-infected patients treated with indinavir. *J Acquir Immune Defic Syndr* **2003**;32:135–42.
166. Boubaker K, Sudre P, Bally F, et al. Changes in renal function associated with indinavir. *AIDS* **1998**;12:F249–54.
167. Malavaud B, Dinh B, Bonnet E, Izopet J, Payen JL, Marchou B. Increased incidence of indinavir nephrolithiasis in patients with hepatitis B or C virus infection. *Antivir Ther* **2000**;5:3–5.
168. Brodie SB, Keller MJ, Ewenstein BM, Sax PE. Variation in incidence of indinavir-associated nephrolithiasis among HIV-positive patients. *AIDS* **1998**;12:2433–7.
169. Martinez E, Leguizamón M, Mallolas J, Miro JM, Gatell JM. Influence of environmental temperature on incidence of indinavir-related nephrolithiasis. *Clin Infect Dis* **1999**;29:422–5.
170. Casado JL, Moreno A, Sabido R, et al. A clinical study of the combination of 100 mg ritonavir plus 800 mg indinavir as salvage therapy: influence of increased plasma drug levels in the rate of response. *HIV Clin Trials* **2000**;1:13–9.
171. Benveniste O, Longuet P, Duval X, Le Moing V, Lepout C, Vilde JL. Two episodes of acute renal failure, rhabdomyolysis, and severe hepatitis in an AIDS patient successively treated with ritonavir and indinavir. *Clin Infect Dis* **1999**;28:1180–1.
172. Hortin GL, King C, Miller KD, Kopp JB. Detection of indinavir crystals in urine: dependence on method of analysis. *Arch Pathol Lab Med* **2000**;124:246–50.
173. Cattelan AM, Trevenzoli M, Sasset L, Rinaldi L, Balasso V, Cadrobbi P. Indinavir and systemic hypertension. *AIDS* **2001**;15:805–7.
174. Hanabusa H, Tagami H, Hataya H. Renal atrophy associated with long-term treatment with indinavir. *N Engl J Med* **1999**;340:392–3.
175. Jaradat M, Phillips C, Yum MN, Cushing H, Moe S. Acute tubulointerstitial nephritis attributable to indinavir therapy. *Am J Kidney Dis* **2000**;35:E16.
176. Reilly RE, Tray K, Perazella MA. Indinavir nephropathy revisited: a pattern of insidious renal failure with identifiable risk factors. *Am J Kidney Dis* **2001**;38:E23.
177. Rietsema WJ. Fever, erythroderma, abdominal pain, and renal failure following initiation of indinavir therapy. *Clin Infect Dis* **1997**;25:1268–9.
178. Sarcletti M, Petter A, Romani N, et al. Pyuria in patients treated with indinavir is associated with renal dysfunction. *Clin Nephrol* **2000**;54:261–70.
179. Dieleman JP, van Rossum AM, Stricker BC, et al. Persistent leukocyturia and loss of renal function in a prospectively monitored cohort of HIV-infected patients treated with indinavir. *J Acquir Immune Defic Syndr* **2003**;32:135–42.
180. Polhemus ME, Aronson NE. Persistent nephrolithiasis after discontinuation of indinavir therapy. *Clin Infect Dis* **1998**;27:1536–7.
181. Cihlar T, Ho ES, Lin DC, Mulato AS. Human renal organic anion transporter 1 (hOAT1) and its role in the nephrotoxicity of antiviral nucleotide analogs. *Nucleosides Nucleotides Nucleic Acids* **2001**;20:641–8.
182. A randomized placebo-controlled trial of adefovir dipivoxil in advanced HIV infection: the ADHOC trial. *HIV Med* **2002**;3:229–38.
183. Hadziyannis SJ, Tassopoulos NC, Heathcote EJ, et al. Adefovir dipivoxil for the treatment of hepatitis B e antigen–negative chronic hepatitis B. *N Engl J Med* **2003**;348:800–7.
184. Marcellin P, Chang TT, Lim SG, et al. Adefovir dipivoxil for the treatment of hepatitis B e antigen–positive chronic hepatitis B. *N Engl J Med* **2003**;348:808–16.
185. Schooley RT, Ruane P, Myers RA, et al. Tenofovir DF in antiretroviral-experienced patients: results from a 48-week, randomized, double-blind study. *AIDS* **2002**;16:1257–63.
186. Cheng AK, Cheng SS, Wulfsohn M, Toole JJ. Two year long term safety profile of tenofovir DF (TDF) in treatment experienced patients from randomized, double blind, placebo controlled clinical trials [abstract 7.317]. In: Program and abstracts of the 9th European AIDS conference (Warsaw, Poland). **2003**. Available at: <http://www.eacs.ws/conference/>. Accessed 19 April 2005.
187. Parish MA, Gallant JE, Moore R. Changes in renal function in patients treated with tenofovir DF vs nucleoside reverse transcriptase inhibitors [abstract 751]. In: Program and abstracts of the 11th Conference on Retroviruses and Opportunistic Infections (San Francisco, California). Alexandria, VA: Foundation for Retroviruses and Human Health, **2004**. Available at: <http://www.retroconference.org/2004/home.htm>. Accessed 19 April 2005.
188. Harris M, Yip B, Zalunardo N. Increases in creatinine during therapy with tenofovir DF [abstract 55]. In: Program and abstracts of the 2nd International AIDS Society Conference on HIV Pathogenesis and Treatment (Paris, France). **2003**. Available at: <http://www.iasociety.org>. Accessed 19 April 2005.
189. Rollot F, Nazal EM, Chauvelot-Moachon L, et al. Tenofovir-related Fanconi syndrome with nephrogenic diabetes insipidus in a patient with acquired immunodeficiency syndrome: the role of lopinavir-ritonavir-didanosine. *Clin Infect Dis* **2003**;37:e174–6.
190. Callens S, De Roo A, Colebunders R. Fanconi-like syndrome and rhabdomyolysis in a person with HIV infection on highly active antiretroviral treatment including tenofovir. *J Infect* **2003**;47:262–3.
191. Karras A, Lafaurie M, Furco A, et al. Tenofovir-related nephrotoxicity in human immunodeficiency virus–infected patients: three cases of renal failure, Fanconi syndrome, and nephrogenic diabetes insipidus. *Clin Infect Dis* **2003**;36:1070–3.
192. Creput C, Gonzalez-Canali G, Hill G, Piketty C, Kazatchkine M, Nochy D. Renal lesions in HIV-1–positive patient treated with tenofovir. *AIDS* **2003**;17:935–7.
193. Verhelst D, Monge M, Meynard JL, et al. Fanconi syndrome and renal failure induced by tenofovir: a first case report. *Am J Kidney Dis* **2002**;40:1331–3.
194. Peyriere H, Reynes J, Rouanet I, et al. Renal tubular dysfunction associated with tenofovir therapy: report of 7 cases. *J Acquir Immune Defic Syndr* **2004**;35:269–73.
195. Izzedine H, Isnard-Bagnis C, Hulot JS, et al. Renal safety of tenofovir in HIV treatment-experienced patients. *AIDS* **2004**;18:1074–6.
196. Kearney BP, Mittan A, Sayre J, et al. Pharmacokinetic drug interaction and long term safety profile of tenofovir DF and lopinavir/ritonavir [abstract 1617]. In: Program and abstracts of the Interscience Conference on Antimicrobial Agents and Chemotherapy (Chicago, Illinois). Herndon, VA: ASM Press, **2003**.
197. Gathe J, Podzamczar D, Johnson M, et al. Once-daily vs. twice-daily lopinavir/ritonavir in antiretroviral-naïve patients: 48-week results [abstract 570]. In: Program and abstracts of the 11th Conference on Retroviruses and Opportunistic Infections (San Francisco, California). Alexandria, VA: Foundation for Retroviruses and Human Health, **2004**. Available at: <http://www.retroconference.org/2004/home.htm>. Accessed 19 April 2005.
198. Reynes J, Peyriere H, Merle De Boever C, Le Moing V. Renal tubular injury and severe hypophosphoremia (Fanconi Syndrome) associated with tenofovir therapy [abstract 717]. In: Program and abstracts of the 10th annual Conference on Retroviruses and Opportunistic Infections (Boston, Massachusetts). Alexandria, VA: Foundation for

- Retroviruses and Human Health, 2003. Available at: <http://www.retroconference.org/2003/>. Accessed 19 April 2005.
199. Strauss J, Zilleruelo G, Abitbol C, Montane B, Pardo V. Human immunodeficiency virus nephropathy. *Pediatr Nephrol* 1993;7:220–5.
  200. Ray PE, Rakusan T, Loechelt BJ, Selby DM, Liu XH, Chandra RS. Human immunodeficiency virus (HIV)–associated nephropathy in children from the Washington, D.C. area: 12 years' experience. *Semin Nephrol* 1998;18:396–405.
  201. Ingulli E, Tejani A, Fikrig S, Nicastrì A, Chen CK, Pomrantz A. Nephrotic syndrome associated with acquired immunodeficiency syndrome in children. *J Pediatr* 1991;119:710–6.
  202. Abrams EJ, Weedon J, Bertolli J, et al. Aging cohort of perinatally human immunodeficiency virus–infected children in New York City. New York City Pediatric Surveillance of Disease Consortium. *Pediatr Infect Dis J* 2001;20:511–7.
  203. Chaparro A, Zilleruelo G, Rivera D, et al. HIV nephropathy in children detected by quantitative proteinuria [abstract 753]. In: Program and abstracts of the 11th Conference on Retroviruses and Opportunistic Infections (San Francisco, California). Alexandria, VA: Foundation for Retroviruses and Human Health, 2004. Available at: <http://www.retroconference.org/2004/home.htm>. Accessed 19 April 2005.
  204. Zilleruelo G, Strauss J. HIV nephropathy in children. *Pediatr Clin North Am* 1995;42:1469–85.
  205. Strauss J, Abitbol C, Zilleruelo G, et al. Renal disease in children with the acquired immunodeficiency syndrome. *N Engl J Med* 1989;321:625–30.
  206. Rajpoot D, Kaupke CJ, Vaziri ND, Rao TK, Pomrantz A, Fikrig S. Childhood AIDS nephropathy: a 10-year experience. *J Natl Med Assoc* 1996;88:493–8.
  207. Ahuja TS, Abbott KC, Pack L, Kuo YF. HIV-associated nephropathy and end-stage renal disease in children in the United States. *Pediatr Nephrol* 2004;19:808–11.
  208. Connor E, Gupta S, Joshi V, et al. Acquired immunodeficiency syndrome–associated renal disease in children. *J Pediatr* 1988;113:39–44.
  209. Chakraborty R, Uy CS, Oleske JM, Coen PG, McSherry GD. Persistent non-gastrointestinal metabolic acidosis in pediatric HIV-1 infection. *AIDS* 2003;17:673–7.
  210. van Rossum AM, Dieleman JP, Fraaij PL, et al. Persistent sterile leukocyturia is associated with impaired renal function in human immunodeficiency virus type 1–infected children treated with indinavir. *Pediatrics* 2002;110:e19.
  211. Sfakianakis GN, Carmona AJ, Sharma A, et al. Diuretic MAG3 scintigraphy in children with HIV nephropathy: diffuse parenchymal dysfunction. *J Nucl Med* 2000;41:1037–42.
  212. Schwartz GJ, Gauthier B. A simple estimate of glomerular filtration rate in adolescent boys. *J Pediatr* 1985;106:522–6.
  213. Schwartz GJ, Haycock GB, Edelmann CM Jr, Spitzer A. A simple estimate of glomerular filtration rate in children derived from body length and plasma creatinine. *Pediatrics* 1976;58:259–63.
  214. National Kidney Disease Education Program Web site. Available at: <http://nkdep.nih.gov/>. Accessed 6 April 2005.
  215. Abitbol C, Zilleruelo G, Freundlich M, Strauss J. Quantitation of proteinuria with urinary protein/creatinine ratios and random testing with dipsticks in nephrotic children. *J Pediatr* 1990;116:243–7.
  216. Abitbol CL, Strauss J, Zilleruelo G, Montane B, Rodriguez E. Validity of random urines to quantitate proteinuria in children with human immunodeficiency virus nephropathy. *Pediatr Nephrol* 1996;10:598–601.
  217. Ray PE, Liu XH, Robinson LR, et al. A novel HIV-1 transgenic rat model of childhood HIV-1-associated nephropathy. *Kidney Int* 2003;63:2242–53.
  218. Ray PE, Liu XH, Henry D, et al. Infection of human primary renal epithelial cells with HIV-1 from children with HIV-associated nephropathy. *Kidney Int* 1998;53:1217–29.
  219. Schoenfeld P, Feduska NJ. Acquired immunodeficiency syndrome and renal disease: report of the National Kidney Foundation–National Institutes of Health Task Force on AIDS and Kidney Disease. *Am J Kidney Dis* 1990;16:14–25.
  220. Sullivan PS, Hanson DL, Chu SY, Jones JL, Ward JW. Epidemiology of anemia in human immunodeficiency virus (HIV)–infected persons: results from the multistate adult and adolescent spectrum of HIV disease surveillance project. *Blood* 1998;91:301–8.
  221. Shrivastava D, Rao TK, Sinert R, Khurana E, Lundin AP, Friedman EA. The efficacy of erythropoietin in human immunodeficiency virus–infected end-stage renal disease patients treated by maintenance hemodialysis. *Am J Kidney Dis* 1995;25:904–9.
  222. Abbott KC, Trespalacios FC, Agodoa LY, Ahuja TS. HIVAN and medication use in chronic dialysis patients in the United States: analysis of the USRDS DMMS Wave 2 study. *BMC Nephrology* 2003;4:5.
  223. Moore RD, Keruly JC, Chaisson RE. Anemia and survival in HIV infection. *J Acquir Immune Defic Syndr Hum Retrovirol* 1998;19:29–33.
  224. NKF-K/DOQI clinical practice guidelines for anemia of chronic kidney disease: update 2000. *Am J Kidney Dis* 2001;37:S182–238.
  225. Bruera D, Luna N, David DO, Bergoglio LM, Zamudio J. Decreased bone mineral density in HIV-infected patients is independent of antiretroviral therapy. *AIDS* 2003;17:1917–23.
  226. Teichmann J, Stephan E, Lange U, et al. Osteopenia in HIV-infected women prior to highly active antiretroviral therapy. *J Infect* 2003;46:221–7.
  227. Huang JS, Rietschel P, Hadigan CM, Rosenthal DI, Grinspoon S. Increased abdominal visceral fat is associated with reduced bone density in HIV-infected men with lipodystrophy. *AIDS* 2001;15:975–82.
  228. Haug CJ, Aukrust P, Haug E, Morkrid L, Muller F, Froland SS. Severe deficiency of 1,25-dihydroxyvitamin D3 in human immunodeficiency virus infection: association with immunological hyperactivity and only minor changes in calcium homeostasis. *J Clin Endocrinol Metab* 1998;83:3832–8.
  229. Teichmann J, Stephan E, Discher T, et al. Changes in calciotropic hormones and biochemical markers of bone metabolism in patients with human immunodeficiency virus infection. *Metabolism* 2000;49:1134–9.
  230. Thomas J, Doherty SM. HIV infection—a risk factor for osteoporosis. *J Acquir Immune Defic Syndr* 2003;33:281–91.
  231. Jaeger P, Otto S, Speck RF, et al. Altered parathyroid gland function in severely immunocompromised patients infected with human immunodeficiency virus. *J Clin Endocrinol Metab* 1994;79:1701–5.
  232. Hellman P, Albert J, Gidlund M, et al. Impaired parathyroid hormone release in human immunodeficiency virus infection. *AIDS Res Hum Retroviruses* 1994;10:391–4.
  233. Cockerell CJ, Dolan ET. Widespread cutaneous and systemic calcification (calciophylaxis) in patients with the acquired immunodeficiency syndrome and renal disease. *J Am Acad Dermatol* 1992;26:559–62.
  234. K/DOQI clinical practice guidelines for bone metabolism and disease in chronic kidney disease. *Am J Kidney Dis* 2003;42:S1–S202.
  235. Linnemann CC Jr, First MR, Schiffman G. Revaccination of renal transplant and hemodialysis recipients with pneumococcal vaccine. *Arch Intern Med* 1986;146:1554–6.
  236. Rey D, Krantz V, Partisani M, et al. Increasing the number of hepatitis B vaccine injections augments anti-HBs response rate in HIV-infected patients: effects on HIV-1 viral load. *Vaccine* 2000;18:1161–5.
  237. Wong EK, Bodsworth NJ, Slade MA, Mulhall BP, Donovan B. Response to hepatitis B vaccination in a primary care setting: influence of HIV infection, CD4<sup>+</sup> lymphocyte count and vaccination schedule. *Int J STD AIDS* 1996;7:490–4.
  238. Guidelines for the prevention of opportunistic infections in persons infected with human immunodeficiency virus. Infectious Diseases Society of America–United States Public Health Service. Available at: <http://www.aidsinfo.nih.gov/guidelines>. Accessed 10 May 2004.